



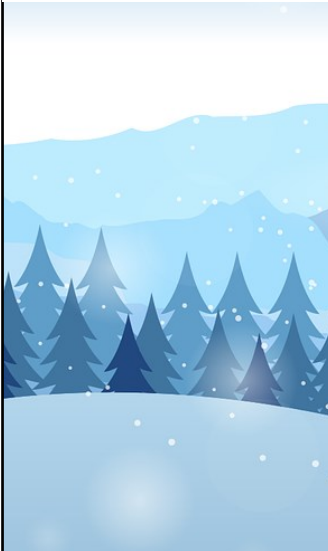
# LAPFORD LOOKOUT



**YOUR LOCAL MONTHLY NEWSLETTER**

Year 24 Issue 12

December 2021



**cancer charity force**  
 Registered Charity No. 1140676

*Live Music  
 Charity Evening*

BAR AND BUFFET  
 LIVE MUSIC FROM "SOUTHERN ROADS"  
 TICKETS ON SALE NOW - £10 PER TICKET

Saturday 18 December 2021	LAPFORD VILLAGE HALL	7 PM Til Late!
------------------------------------	----------------------	----------------------

*Tickets available from  
 John Burrows - 07814 941454  
 Rachel Phillips - 07533 877686  
 raznev@sky.com*



*L.A.D.S. Presents*



## *A Christmas Variety Show!*

*10th & 11th of December*

*The Victory Hall! Curtain up at 7.30pm*

*Tickets £12 includes Two Course Hot Supper*

*Licensed Bar*

*Tickets contact Ian Wilkie  
 01363 83437 / 07484 844 899*

*Doors open from 7pm*

## *PARISH CHURCH XMAS FAYRE*

**SATURDAY 4TH DECEMBER 10.30-1.00 VICTORY HALL**

*Mince Pies,  
 Cakes,  
 Scones,  
 Coffee*

*Bric-a-brac,  
 books and  
 many other  
 stalls*

*Preserves,  
 Relishes,  
 Chutneys  
 etc.*

*Christmas  
 Hamper  
 Draw  
 @ 12.30*



## CHRISTIANS TOGETHER IN LAPFORD WELCOME YOU TO:



### THE PARISH CHURCH OF ST THOMAS OF CANTERBURY

**Vicar:** The Reverend Robert Gordon - (e) [vicar.ncw@gmail.com](mailto:vicar.ncw@gmail.com)

**Churchwarden:** Joan Graham - (e) [jemq47@aol.com](mailto:jemq47@aol.com) (t) 01363 83047

1<sup>st</sup>, 2<sup>nd</sup> & 3<sup>rd</sup> Sundays – Lay Led Morning Prayer – 9.30 a.m.

4<sup>th</sup> Sundays – Common Worship Eucharist – 9.30 a.m.

5<sup>th</sup> Sundays – See announcements on Church notice board

*The Church is open for private time on Wednesdays between 9.00 a.m. and 12 noon*

ALL ARE WELCOME - REFRESHMENTS SERVED AFTER SERVICES

*Forthcoming events for your diaries*

Saturday 4<sup>th</sup> December – Mince Pies, Coffee Morning and Grand Hamper Draw in the Victory Hall 10.30 a.m. – 12 noon

**Friday 24<sup>th</sup> December – CRIB SERVICE 4.00 p.m.**

Saturday 25<sup>th</sup> December – Christmas Eucharist 10.30 a.m.



### LAPFORD CONGREGATIONAL CHURCH

Services every Sunday at 11.00am

Communion will be held on the second and fourth Sundays

Contact: Peter and Viv Lacey - Tel: **884230** or Cat Seymour (Youth and Family Worker) - Tel: **884432**

Pastor Caroline Stott - Tel: **01404 831965** - email: [caroline.stott2@btinternet.com](mailto:caroline.stott2@btinternet.com)

[www.facebook.com/lapfordcongregationalchurch](http://www.facebook.com/lapfordcongregationalchurch)

Preachers:

5th December - Merril Archer

12th December - Rev. Caroline Stott

19th December - All age Family Service

26th December - No Service

Events:

1st December Puppet Workshop, 3.30pm

8th December Puppet Workshop, 3.30pm

15th December Puppet Workshop, 3.30pm

19th December Carols by Candlelight, 6.00pm

21st December Messy Church Christmas Party, 3.00pm

22nd December Nativity Puppet Show, 5.30pm



### LAPFORD COMMUNITY CHURCH

Meets every Sunday morning at 10.30am in the Victory Hall

4th Sunday of the month is Family Service

Bible Study on Tuesdays 7.30pm and Fellowship Group on Wednesdays 7.30pm

Contact: Briony Clinch - Tel: **83666**

<https://www.lapfordcc.org.uk/>

Please visit our website for information about the Foodbank and ARK.  
You will also find lots of information about Church activities and on-line services.

*All the Churches welcome everyone to any of their services and social events.*

*We look forward to fellowship with you.*





## LAPFORD LOOKOUT

Contributions  
welcome

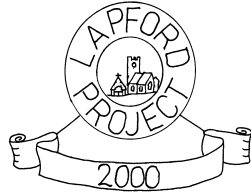


**lapfordlookout@gmail.com**

**Deadline for inclusion in the next issue:  
6.00 pm on the 10th December  
for inclusion in January issue**

### MESSAGE FROM THE EDITOR

Due to printers' shut down over the Christmas holiday period we have an earlier closing date of the 10th of December for submission of content for the January issue.



I have been informed by our wonderful treasurer that we have now had a full year of colour covers on the Lapford Lookout. We understand these have been well received and would like to thank all our advertisers for making this possible.

It feels as if these last few months have flown by. Is it really nearly Christmas? Everyone linked to the Lapford Lookout would like to take this opportunity to wish you all a very Merry Christmas and a Happy New Year. For some December amusement, I have included eleven mice in the colouring page this month. Can you find them all?

**Beccy**

### SHOP LOCALLY FOR CHRISTMAS!

Calendars in aid of Force Cancer Charity are being sold in memory of Karen Burrows. The minimum donation is £7. Please contact Jessica on 07960 197460 or John on 01363 83985.

FOST Christmas Cards featuring our Parish Church are also on sale. The cards are A5 size (21cms x 15cms or about 6x8 inches) and are printed on glossy white card. The message inside says "A Very Happy Christmas".

These can also be purchased from:

Ron Kercher: ronaldkercher0@gmail.com  
Andy Epstein: amepstein@gmail.com or 83332  
Prue Lambert: pruelambert@yahoo.co.uk

They are also available from the church, which is open on Wednesday and Sunday mornings.



## DATES TO LOOKOUT FOR

### December 2021

- 1st Lapford Parish Council Meeting, Victory Hall, 7.30pm
- 4th Lapford Parish Church Xmas Fayre, Victory Hall, 10.30am
- 8th Lapford Over 60's, Christmas Lunch, Waie Inn.
- 10th Early copy deadline for January Lapford Lookout 6.00pm
- 10th/11th LADS Christmas Variety Shows
- 13th Road Closure from Lapford Cross to Barris House
- 14th Gardening Club, The Ark, 7.30pm
- 16th Ladies of Lapford, Christmas Meal at the Scoop, 7pm
- 17th Lapford Pensioners Lunch, Victory Hall, 12.00pm
- 17th The ARK closed until 7th January
- 18th Force Charity Evening, Victory Hall, 7.00pm
- 19th Carols by Candlelight, Lapford Congregational Church, 6.00pm
- 22nd Carol Singing around the village, meet at The ARK 6.30pm, weather permitting
- 22nd Nativity Puppet Show, Lapford Congregational Church, 5.30pm
- 24th Crib Service, Lapford Parish Church, 4.00pm

### January 2022

- 7th The ARK reopens
- 8th Public Meeting re HM The Queen's Platinum Jubilee Celebrations, Victory Hall, 10.30am
- 11th Revel AGM, Victory Hall, 7.30pm
- 20th Ladies of Lapford Fun, Games and Nibbles, The ARK, 7.30pm
- 24th Road Closure outside Prospect Cottage
- 24th Victory Hall Committee Meeting, Victory Hall, 7.30pm

### February 2022

- 17th Ladies of Lapford, Willow Weaving Talk at The ARK with the Garden Club at 7.30pm

Merry Christmas



Moon over Lapford, Christmas Eve 2020  
Photo - Hazel Morgan



# Lapford Weather Review

## LAPFORD WEATHER OCTOBER 2021

Milder and wetter than average.

The warmest day was the 17<sup>th</sup> with a maximum of 19.1°C and the coolest was the 22<sup>nd</sup> with a maximum of 11.0°C. The coolest night was on the 14<sup>th</sup> with a minimum of 2.9°C. There were three grass frosts during the month.

Total rainfall was 132.0 mm, about a third wetter than average. The wettest day was the 28<sup>th</sup> with 27.5 mm rain.

The windiest day was the 20<sup>th</sup> with a gust of 49 m.p.h.



**Andy Epstein**



Lapford & District  
Over 60 Club

## LAPFORD OVER 60'S CHRISTMAS PARTY

WEDNESDAY 8TH DECEMBER AT

THE WAIE INN

COACH DEPARTS 11.30

COST £13.00 PER PERSON COACH FREE

THEME "CHRISTMAS"

Entertainment tbc

[lapfordover60@yahoo.com](mailto:lapfordover60@yahoo.com)

01363 83810

## LOWER TOWN PLACE GOVERNANCE AND THE FUTURE

Back in 2014 Lapford residents were appalled at the planning permission granted for the erection of eight houses in the centre of Lapford. Despite over 150 objections and petitions being submitted by residents of the village, and the total opposition of Lapford Parish Council, Mid Devon District Council had approved the proposal.

These were in no way to be social or affordable housing; Lapford would have gained nothing but lost the possibility of creating any more amenity space in the village centre. The development would have enveloped the Victory Hall leaving no outside space whatsoever with no future possibility for expansion or even major structural repairs.

Villagers met to look at how to achieve this but had no formal organisation or funds and to get anywhere needed both. A Community Benefit Society (CBS) was set up. This allows a registered body such as HOLD to raise funds and purchase land and property for our public and community benefit. HOLD is governed by the Co-Operative and Community Benefit Societies Act of 2014. HOLD's rules were drawn up by the legal team at Co-Operatives UK.

This model is a means for community groups to buy and run pubs, shops, and other amenities as a non-profit organisation for the benefit of the community. It is a means of raising money ensuring that the donations are safely invested for the benefit of the community, without the risk of the donors being individually liable for any losses. The Society and its members are legally bound to use their contributions and any profits solely for the benefit of the community. It is illegal for any member to make a personal profit or gain from the society. This requirement is upheld by the national regulator, the Financial Conduct Authority.

The chosen name: Heart of Lapford Development (HOLD for short), successfully raised the funds and purchased Lower Town Place with the support of the Parish Church, Lapford Youth Club, Lapford Parish Council and donations from our village. It was essential to raise enough funds not only to purchase the site but also to develop it into the community area it is now. The site was opened in October 2020 and is open to all.

So, HOLD has succeeded in its first objective.

However, the format of a Community Benefits Society has caused some misunderstanding and confusion among residents. The £50 membership has proven to be a barrier and has been used and may be understandably but incorrectly, against achieving benefit for Lapford. The HOLD Board is now recommending a different form of governance and regulation that is more widely used following advice from Charity Commission.

The Charity Commission also recognises the need for a community interest charitable organisation with limited liability through a Charitable Incorporated Organisation (or CIO). This is specifically designed for a community to own and manage facilities for the benefit of that community, with all the safeguards and financial regulations required. It is freely available on-line so if you want to have a look search for 'Charity Commission CIO' on Google. The HOLD Board is considering the federation version and will provide firm proposals in 2022.

We have also investigated at the CIO based constitutions of several village halls and similar amenities, including Chagford, Lympstone, Yeoford, Cruwys Morchard and High Bickington. We are now working through the model section by section, incorporating the most suitable options for Lower Town Place. The Charity Commission gives a lot of guidance and using the experience of other villages, we are close to reaching something suitable for Lapford. But it is quite a task and very time consuming, especially as we also have to ensure that our agreements with the Youth Club and the Parish Council in respect of the funds that they have contributed are fully incorporated.

Once we are satisfied, we will recommend a model for review and comment on before organising a formal vote to convert HOLD from a Community Benefit Society to a Charitable Interest Organisation. The proposed constitution will also be reviewed by a solicitor specialising in charity law and that advice will be published.

## LAPFORD VICTORY HALL NEEDS YOU

Over the years the Victory Hall Committee has been well populated, but recently, due to other commitments and Covid pressures, numbers have dwindled. The Victory Hall plays an important part in the community and it is important that we have a strong and broad representation on the Committee to influence what we do in the future.

The current constitution states that the hall committee can be formed of 10 elected members and 13 representative members. The representative members would be made up from organisation's that use the village hall.

Being a member of the Victory Hall Management Committee will enable you to put ideas forward to change/develop the hall for the benefit of not only your organisation but the village in general.

Come along and join our committee and have your say.

Are you new to the village? Would you like to meet new people? We are very friendly and would welcome new blood.

Our next committee meeting is on the 24th January in the Victory Hall at 7.30pm. In the meantime, if you need any more information, please do not hesitate to contact any of the existing committee members. My number is at the back of the Lapford Lookout.

### **Darren Crump**

Chair Person

Darrencrump99@hotmail.co.uk



## LAPFORD PARISH COUNCIL NOTES, OCTOBER/NOVEMBER 2021

*Please note this is a summary of the main points of interest. A copy of the draft minutes will be made available on the village website, and on the notice boards in the Orchard Centre and in The ARK.*

### **The Parish Council met on 20<sup>th</sup> October 2021 in the Victory Hall.**

Two members of the public attended.

- Cllr Eginton had sent a report identifying potential noise issues around Pope's Wood and Eastmere Farm. The Clerk is to contact MDDC with regard to this.
- The Church Green Trustees had met and supported a proposition to relocate the community notice board from the Green to outside the Victory Hall.
- The Heart of Lapford Development Board had submitted a report to the Council which had yet to be sent to Councillors.
- The Clerk outlined details of discussions held with the Chair and Treasurer of HOLD and the Chair of the Youth Club Management Committee concerning the history of the development of Lower Town Place.
- The possibility of developing a Neighbourhood Plan was discussed.
- It was hoped that there may be signs of progress with regard to Highway issues in the Parish.
- New Car Park signage has been delivered.
- Weeds in the car park and other public areas must be removed by mechanical means in the future. Spraying is no longer allowed.
- A report on the situation with the clock in the Church Tower will be presented to the next PC meeting.
- A new Snow Warden has been appointed and more volunteers have come forward for Road Warden training.
- Councillors' responsibilities for the next year were agreed.
- A review of road signage in the parish will be carried out shortly.
- A public meeting to discuss arrangements for celebrating the Queen's Platinum Jubilee to be held in the Victory Hall on Saturday 8<sup>th</sup> January at 10-30 a.m.
- The Parish Council will meet again on Wednesday 3<sup>rd</sup> November at 7-30pm.

### **The Parish Council met on 3<sup>rd</sup> November 2021 in the Victory Hall.**

No members of the public attended.

- Issues pertaining to the repair and maintenance of the Parish Clock were still ongoing. The minute hand had been repaired.
- The notice of Conclusion of Audit for the Parish Council accounts had been received and would be posted on the website and notice boards.
- A preliminary look at the budget for the next financial year had focused on the Council's reserves and financial viability looking into the future. Further consideration would be given at the next meeting.
- There were no reports from County & District Councillors.

The Parish Council will meet again on Wednesday 1<sup>st</sup> December at 7-30 pm in the Victory Hall.

## THANK YOU

May I thank everyone involved with the service on the Church Green on the 14th November.

The Green looked wonderful. Well done to all involved with arranging it and the weather was kind, amazing for early November.

Thank you everyone.

Jill Doe



## BEETROOT SALAD

This is good with cold meats, fish, cheese, or on its own with bread.



300g (12oz) cooked beetroot

1 small red onion

Dressing: 1 tbsp balsamic vinegar, 3 tbsp olive oil, a tsp honey and a squeeze of lemon juice  
pomegranate seeds and watercress to finish [optional]

Slice the beetroot and red onion thinly and arrange in a serving dish. Mix the dressing and season with sea salt and freshly ground pepper. Spoon over the beetroot and onion.

Sprinkle with pomegranate seeds and garnish with watercress.

Paul Cleave

## TIPS TO MAKE ONLINE ACCOUNTS MORE SECURE



### 1: Creating memorable passwords

A good way to create strong, memorable passwords is by using 3 random words. But remember, don't use words that can be guessed (like your pet's name). You can include numbers and symbols if you need to. For example, "RedPantsTree4!"

### 2: Saving passwords in your browser

Saving your password in your browser means letting your web browser (such as Chrome, Safari or Edge) remember your password for you.

This can help:

- make sure you do not lose or forget your passwords
- protect you against some cyber crime, such as fake websites

It is safer than using weak passwords, or using the same password in more than one place.

### 3: Email account passwords

If a hacker gets into your email account, they could:

- reset your other online account passwords
- access personal information you have saved about yourself or your business

Your email password should be strong and different to all your other passwords. This will make it harder to crack or guess..

01/04/2021

## TO THE YOUNG PEOPLE (who are struggling right now)

When I was 18 I wanted to stop living, not because I actually wanted to die but because I desperately needed the pain to stop.

The pain of the confusion.

The pain of trying to fit in, trying to find my place, trying to see my worth.

The pain of a constant push for perfection.

I looked around and felt everyone else was breezing through a minefield that could blow me up at any moment.

And I felt completely alone, despite my loving family and friends.

I was alone in my suffering, or so I thought.

Right about now, I know, there are many young people who cannot see a way out, a way back, a way forward.

And I fear that some may act on this urge without being shown another way.

Please tell them:

Its vital that you believe, despite all the voices in your head, that you have a great future.

That you WILL find your place.

That you WILL feel worthy one day.

That you WILL understand your feelings better, in time.

Until then, the only way to survive is to shine light on the darkness in your head.

Say it, write it, sing it, blog it, text it...

Anything you can do to bring that pain out of the shadows and into the light will make it so much less scary.

And seek out others in pain too, there are many, they will help you feel less alone.

Do not ever, EVER, believe, that these feelings you have will always remain.

They can go overnight, literally overnight. It's that sudden sometimes.

A new day can dawn at any moment and bring your new life with it.

I know, I have been there,

I know.

To any young people who are struggling right now, things will never be this bad again.

If you get through this you can get through anything.

Anything.

Donna Ashworth



## LAPSTOCK - THAT'S IT FOLKS!

"Sadly, Lapstock can no longer happen as there is no-one or a working-group of people willing to come forward to organise our music festival for next summer", said past organisers Steve and Jaine Keable. "It is a shame, but better to finish after thirteen good years. We know many in the village will be disappointed but these events take a good bit of effort and commitment to be successful". There were a dozen people who turned up to the 'Have your say' event plus a handful of apologies. All had some involvement in Lapstock meaning the call for a New Crew had no response.



## THE DOWNSIDE OF RENEWABLE ENERGY:



## LADIES TRAVEL THE SOUTH WEST COAST PATH (VIRTUALLY)

Like many people locally, a lot of those in the Ladies group have walked parts of the coast path so when it was suggested that we ask someone to talk about this, it seemed like a good idea. So it was that Gary Holpin found himself setting up ready to talk about his experiences and show us some of his amazing collection of photographs. He looked very calm and organised and no-one would have suspected that at the eleventh hour he had been doubtful that he would be able to do the talk. On the day he was coming, he emailed that he had everything but a screen or white wall; presumably we had one or the other, didn't we? Er, actually, no. The walls of The ARK are covered with a display and we don't have a screen. I reassured him that our members were nothing if not resourceful and Sue set to work. She tried various likely sources all of which pointed to one chap who owned a screen but when he was contacted, he had lent it to a friend. Sue began again and Briony supplied the answer: Ironically, a screen was sitting quietly in the store room of The ARK all the time just waiting to be used but none of us had realised it was there! Panic over. We'll know next time.



We managed to fill the room almost to capacity such is the interest in the Coast Path and we were well rewarded. Gary told us how he had come to Honiton some years ago with the Met Office. He said that having frequently told friends what a beautiful area it was, with a wonderful coastline, he decided that he ought to try walking some of it instead of just talking about it. It was a decision that was to change his life though he didn't know it then.

Things seemed to start well, but . . . He took himself to Minehead, the official start of the walk and after a good night's sleep set out in his smart new walking boots. He accomplished a number of miles (there would be 630 all together) found a B&B and settled down for a good night's sleep thinking this walking lark was a piece of cake. However, the next day was another long one and by the end of it he realised his foot was getting a bit sore. He had a blister. Nothing to worry about, he thought, it will soon settle down. Oh, the innocence of a new walker. At the end of the third day, it was three times as big and after one more day he had to give up. He could barely walk for the blister, all his muscles ached and he was sun burnt. He had learned the first lessons. Break in your new boots gently and gradually, build up your walking slowly and wear sun screen.

Luckily, he came back stronger and more experienced and over a period of time, he completed the walk, from Minehead to Poole. He had done those 630 miles and according to him (and the guide book) had climbed the equivalent of Mount Everest four times! If you like statistics, you might like to know that he had also crossed 230 bridges, gone through 880 gates and climbed 436 stiles! (There are more figures but I'll stop there.) He'd also walked up to his knees through very cold water to cross a river because he had spent too long taking photographs and the incoming tide had completely hidden the stepping stones he should have been able to use.

Gary accompanied his talk with his photographs which he collected on his way back in the other direction. Yes, having completed the route, he had developed a real love for walking and a desire to take better photographs. So, he set out off again from Poole this time and on his way round he taught himself photography. The results are certainly stunning. Such was his success that he, decided to give up the job at the Met Office and start a new career as a professional photographer teaching photography as well as earning a living with his striking pictures. It was a decision he has not regretted.

His talk was well received and his photographs much admired. When he had gone, the group were happy to settle down to tea, cake and chatter. It was dark and damp outside and for now, it was enough to have done the coast path virtually.

**Sue Raffill**

## CHURCH CLOCK

Many thanks to Andy Hills who is pictured abseiling from the church tower to assist in releasing the clock hands which had become corroded.

Images: Courtesy of Andy Epstein



## BOOK REVIEW: THE LEFT HAND OF DARKNESS BY URSULA LE GUIN

Christmas approaches and with it, the annual rituals of books and films. Some people swear by *A Christmas Carol*. I find Dickens to be almost forensically written and morally complex at the same time. If you want something apposite for long, cosy nights and crackling firesides, the above could be it.

Set in a distant future, Genly Ai is an investigator for The Ekumen; a galactic empire based not on force, might and conquest, but "*curiosity, adventure, delight.*" He has come to Gethen, a planet in a permanent state of Winter, to convince them to join The Ekumen. Ai's friendship with King Argaven's advisor Estreven makes him a pawn in a political game.

That's the basic narrative of the novel, but it doesn't really reveal it's style, which alternates between the analytics of Ai's field reports, Gethenian fables and sacred texts; plus, the actual friendship between Ai and Estreven. Which, it is suggested has the potential to be much more.

I'd also draw attention to worldbuilding, which for me is as much a capital crime for writers as info dumping. The fine details of life on Gethen come conversationally. So, we learn Gethenian's become the opposite gender (called *Kemmer*) for a few days each month. This biological fact has shaped every part of their society as much as climate. The cold means that Gethenians eat constantly, strangers are both welcomed and given shelter and buildings have two sets of doors to allow for snowdrifts.

In that sense, it comes from that late 1960's era of science fiction. But it's easier to read and more graceful than something like *Dune*. I'd probably class that as something like *Catch 22* or *Ulysses*: a *K2* or a *King Lear* of a book; where everyone makes an attempt but few succeed.

But it's perfect for Christmas, as it shows one human life as dependent on another. The title comes from a religious ceremony called a *foretelling* that Ai attends. The celebrants of which worship a female messiah called Meshe, who died over two Millennia ago.

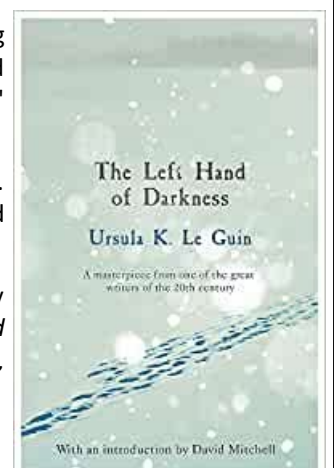
Ai is seen by some as a sexual deviant for his permanent gender status. He's also seen as a curiosity on a planet with no birds or insects, so the concept of flight doesn't exist. Space is referred to as The Void, where the souls of sinners go.

Estreven's name might mean *traitor* on Gethen, but he is Ai's saviour in a greater cause. Ai is a young man who has given his life towards it. He's actually over one hundred years old, having travelled from Earth at near light speed in suspended animation. His crewmates will awake in a few years' time as a security measure, but he is literally alone in an alien land.

Le Guin is seen by many as an icon of fantasy and science fiction; but I think that isn't enough praise. I'd also mark her personally in the same league as Bulgakov or Spark. I've read one book by each and I am terrified to read another, lest it isn't as good.

However, now we are near the equinox and we're all out of Whamaggedon, why not join me in my ritual? You'll learn that "*a single voice, speaking truth is a more powerful force than fleets and armies, given time.*" See also "*Love doesn't just sit there, like a stone, it has to be made like bread, remade all the time, made new.*"

**Kev McCready**







The next gardening club meeting will be held on

**14<sup>th</sup> December**

**The Ark at 7.30pm**

We will be using natural greenery (all provided) to make a festive door wreath. Accompanied by mince pies and mulled wine.

Please bring secateurs or strong scissors if you have some.



*A date for your diary.*



Have you ever wondered how goats' cheese is made? Have you ever seen different varieties of goats' cheese in the supermarket, or delicatessen, or on the stall at the local farmers' market, and wondered what is different about the various types of cheese on display? Well, there are two options: the first, and best, is to come along to the Lapford Gardening Club meeting in **The Ark on 8<sup>th</sup> March** (limited tickets available from The Ark) and listen to an expert, Dave Johnson, explain all about it. The evening will allow you to taste various samples, cleansing your palate between each sample with an appropriate beverage, which will also be provided on the night. Cheese will be available to purchase during the evening. The second option is to buy a goat.

PRESENTATION BY NORSWORTHY DAIRY GOATS

With cheese tasting\* and wine

\*other cheeses available

**AGE**

**SUPER GRANNY – DEFENDER OF JUSTICE**

The following is a true story reported in *USA Today*:

An elderly Florida lady did her shopping, and upon returning to her car, she found four males in the act of leaving with her vehicle. She dropped her shopping bags and drew her handgun, proceeding to scream at the top of her voice, "I have a gun, and I know how to use it! Get out of the car!"

The four men didn't wait for a second invitation. They got out and ran like mad. The lady, somewhat shaken, then proceeded to load her shopping bags into the back of the car and get into the driver's seat. She was so shaken that she could not get her key into the ignition.

She tried and tried, and then it dawned on her why. A few minutes later she found her own car parked four or five spaces further down. She loaded her bags into the car and then drove to the police station.

The sergeant to whom she told the story doubled over on the floor with laughter. He pointed to the other end of the counter, where four pale men were reporting a car-jacking by a mad, elderly woman described as white, less than five feet tall, with glasses and curly white hair, and carrying a large handgun.

No charges were filed.



# ART IN THE ARK

**NOW ON and throughout  
December and January**

All Artwork is by Lapford Artists and is For Sale



Artists: **Louise Jackson, Warren Clayburn, Jill Doe, John Sellings, Ruth Staples, Abi Hart, Rebecca Holley**

Open normal ARK Café times  
or by appointment please ring Rebecca on 07941 648087

Kindly supported by: The ARK and Lapford Project 2000

## The Queen's Platinum Jubilee Celebrations 2022



### A Public Meeting

For anyone who would like to have a part in shaping how celebrations in Lapford might look next summer.

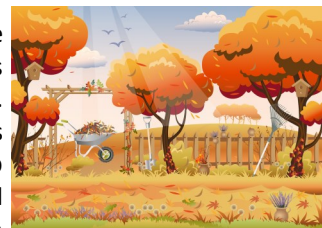
**Saturday 8<sup>th</sup> January 2022  
10-30a.m. in the Victory Hall**

The aim of the meeting will be to brainstorm ideas and form a Committee to take the project forward.

*Lapford Parish Council*

### LOWER TOWN PLACE GARDENING GROUP

Some recent work on Lower Town Place has seen the planting of twelve apple trees along the roadside boundary. These will be trained as cordons along the fence which will keep their size and shape restricted whilst hopefully producing a crop of apples. These will mainly be eaters and will be available to all. Many thanks to Sandra Munday and Ron Harle for their help with this.



Some more wild flowers have also been planted on the western side of LTP, where the grass is left uncut for most of the year. Climbers will also gradually spread along the fence. The car park hedge has now also been pruned for the winter to encourage thicker growth next year.

Many thanks to Mike Leach for keeping the grass cut through the summer, and now the autumn. It has been kept looking very neat.

I still have a few of the grafted apple trees available, on dwarfing rootstock, so trees would be suitable for smaller sized gardens. They are different local varieties of dessert apples. I also have 2 varieties on standard rootstock which would grow into large trees and would require space. Please let me know, minimum charge of £12 for each tree.

**Andy Epstein**

Contact: [amepstein55@gmail.com](mailto:amepstein55@gmail.com)



## The Plant Shed & Farm Shop Eggesford Station Yard

***We offer the best quality local produce***

*As well as a full range of fruit, veg, meat, dairy, fish and store-cupboard essentials we also offer locally-reared lamb, pork and beef*

*Open:*

*Tuesday – Friday 10am-6pm*

*Saturday 10am-4.30pm*

***NOW TAKING CHRISTMAS ORDERS!***

*Gold-standard Turkeys and all the trimmings  
Hampers - local crafts - tasty treats*

*Open until 1pm on Christmas Eve  
Back on 4th January*

**Please call 01769 581318  
or email [hello@theplantshed.co.uk](mailto:hello@theplantshed.co.uk)**

**SEE OUR LATEST NEWS ON FACEBOOK**



## Credition Independent Bed Company

27 High Street Credition EX173AH(Nextto Costa)

Email: [enquiries@creditionbeds.co.uk](mailto:enquiries@creditionbeds.co.uk)

Website: [creditionbeds.co.uk](http://creditionbeds.co.uk) Tel: 01363 774156

### Special Offers

Clearance Mattresses starting from

Single £100 - Double £140 - Kingsize £180

**EXTRA 20% DISCOUNT**

when bought in quantities of 6 or more -  
Limited Offer

4'6 Pocket Master 1000 Divan Set  
£379

4'6 Dartmoor Beds  
Handmade Kirtonian  
Firm Mattress with luxury  
layers of Dartmoor Wool  
£799

4'6 Double Amber Package Deal  
2 drawer divan set with matching headboard  
£399

5' King Size Ice Cool 1000  
Mattress - Covered in a  
Luxurious Cooling Yarn Fabric  
£439

3' Single Stress-Free Max Cool  
5 Point Adjustable Bed  
£949

4'6 Double Pocket 1000  
Master Firm Mattress  
£289

4'6 Double Coral Package Deal  
2 drawer divan set with matching headboard  
£529

4'6 Merino  
Wool Mattress  
£479

- Fast Delivery - Expert Advice - Best Prices



## Mid Devon Helpers

When you need a helping hand the most  
Shopping | Household Duties | Companionship | Errands

- ◆ Do you need a personal assistant or a helping hand?
- ◆ Do you know someone that desperately needs help with everyday tasks?
- ◆ Do you have clutter that has been getting on top of you?
- ◆ If you answer 'YES' to any of these questions We are here to help



01363 83058



07891556884



[middevonhelpers@gmail.com](mailto:middevonhelpers@gmail.com)



[www.facebook.com/middevonhelpers](http://www.facebook.com/middevonhelpers)



@middevonhelpers

COMPETITIVE PRICES, FRIENDLY STAFF, FULLY INSURED AND  
DBS CHECKED

## DO YOU NEED PLANS ?



w: [bsa-exe.co.uk](http://bsa-exe.co.uk) e: [info@bsa-exe.co.uk](mailto:info@bsa-exe.co.uk)

**BARRIE SIMONS & ASSOCIATES** is an Award Winning Architectural Practice, specialising in **Planning, Building Regulations, Interior Design, Project Management and Building Surveying**. We undertake New-build Houses, Barn conversions, Listed buildings, Extensions, Renovations and Equestrian & Agricultural Buildings of any size. View our extensive portfolio on the web and social media. BSA covers the whole of the South West and offers a **FREE INITIAL CONSULTATION**.



**EXETER**

tel: 01392 2711734

**CHAWLEIGH**

tel: 07973617294

## The Old Malt Scoop Inn

Christmas Menu available now. Contact us to book.

### Upcoming Events

Christmas Eve - Live Music from Paul Adams  
followed by the Christmas Draw.

Christmas Day – Landlord Drinks 11:00 till 2:00.

Our chance to buy you a drink!

New Year's Eve – come and see the New Year in with us.

### Opening Times

Daily from noon until close.

Food served from noon till 3:00pm  
and again from 6:00pm until 8:30pm.

Christmas Day – 11:00am till 2:00pm

Boxing Day – Closed

Pop in and see us, email or give us a call:  
[eatdrinkstay@theoldmaltscoopinn.co.uk](mailto:eatdrinkstay@theoldmaltscoopinn.co.uk)

01363 83330

Catriona & Jonathan

**LAPFORD LOOKOUT  
ADVERTISING RATES AND POLICY**

Lapford Lookout has a circulation of 600 copies and the advertising of village events is free of charge. There is a charge for all other advertisements and current advertising rates, **payable in advance**, are:

- One eighth page: £6 per month.
- One quarter page: £12 per month.
- One half page: £24 per month.
- Whole page: £48 per month.

Pay for 12 months and you get **one extra month, FREE!** Please send all advertising requests to the Editor in time to make the deadline of the 14th of each month for inclusion in the next issue. Please allow sufficient time to make your advance payment which may be by BACS or cheque. Payment details will be on your invoice.

Overworked or Stressed?      Achey muscles?  
Tense shoulders?              Stiff back?

**Massage Therapy in Lapford.**

Penny King

VTCT level 3 diplomas in Holistic Therapies,  
Aromatherapy, Sports Massage

Please feel free to contact me to find out more,  
discuss your needs or book an appointment.

FB page  
'Penny King Complementary Therapist MFHT'  
Tel 01363 83091  
Mob 07851 726791



# TUCKERS COUNTRY STORE

Your One Stop Country Shop

- Farm Pet Equine & Farm Supplies
- Open 6 days a week
- Lord's Meadow, CREDITON
- www.edwintucker.com.
- 01363 772202
- Free parking, friendly service, competitive prices

# Mike Leach

- Grass & Hedgecutting
- Fencing • Landscaping
- Gardening • Paths & Patios
- Pressure Washing
- Now cutting lawns & paddocks up to 4 acres



Tel: 01363 83656 (Ans Available) Mob: 07875 026139  
33 Highfield, Lapford, CREDITON, Devon, EX17 6PY

moorland fuels  
part of your landscape



Call Today:  
01837 55700

In the last 12 months, we delivered  
in our agreed delivery window  
99.6% of the time.



**Ask About:**

- Heating Oil and Tractor Diesel
- Oil Tank Cleaning
- Lubricants and Additives
- Coal
- Oil Tank Replacement and Installation

www.moorlandfuels.com



## YOUR LOCAL LEGAL EXPERTS

- Moving Home
- Family Law
- Wills & Probate
- Lasting Powers of Attorney
- Agricultural
- Landlord & Tenant
- Accountancy & Tax Planning
- Commercial Property & Leases



**QualitySolicitors**  
Charlesworth Nicholl

Changing the way you see lawyers.

☎ 01363 774706 ✉ mail@charlesworthnicholl.co.uk

🌐 www.qualitysolicitors.com/charlesworthnicholl

31 High Street, CREDITON, Devon, EX17 3AJ

# THE BIG SWEEP

YOUR LOCAL REGISTERED CHIMNEY SWEEP



FOR A CLEAN AND  
EFFICIENT SERVICE  
PLEASE CONTACT RICHARD

MOB: 07810 116798

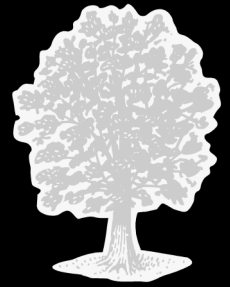
EMAIL:  
richard@thebigsweep  
northdevon.co.uk



# JOSH NOON TREE SERVICES

Tree surgery and  
low impact forestry  
Quality seasoned logs  
and kindling for sale

☎ 01363 83908  
07792 906258



# NICK TUCKER

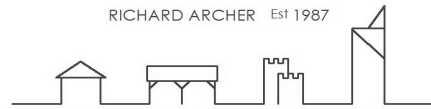
Qualified Carpenter & General Builder  
Working in the village for 25 years

EXTENSIONS, LOFT CONVERSIONS,  
KITCHENS & BATHROOMS,  
DOUBLE GLAZING & CONSERVATORIES,  
DECORATION & GENERAL MAINTENANCE

Prospect House, Lapford  
Tel: (01363) 83601

# ARCHITECTURAL SERVICES

RICHARD ARCHER Est 1987



PLANNING DRAWINGS for  
EXTENSIONS CONVERSIONS NEW BUILDS  
PLANNING & BUILDING REGULATION APPLICATIONS

Copplestone  
Devon

SIMON ARCHER M: 07966 347 957

E: [simon@architectural-services.org](mailto:simon@architectural-services.org)

Visit the website: [architectural-services.org](http://architectural-services.org)

DESIGN DRAWINGS SURVEYS ADVICE



Jo McDougall

Chartered Physiotherapist, MCSP, HCPC reg.

## MOBILE PHYSIOTHERAPY

Need **Physiotherapy Treatment**? Have it in the comfort of your own home. I am a qualified Physiotherapist with more than 30 years experience, and I will come to you to treat you at home.

### Conditions treated include:

- Back and Neck pain, sciatica, whiplash.
- Sprained joints/Ligaments e.g. ankles, knees, shoulder.
- Pulled muscles e.g. calf, thigh.
- Sports Injuries e.g. rotator cuff, tennis elbow, Achilles tendonitis.
- Hip pain e.g. gluts pull, groin strain, piriformis
- Rehab after injury and operations e.g. fractures, knee replacement, hip replacement etc
- Help with general mobility problems.
- Pilates and appropriate exercise programmes.

Contact details: mobile - 07597 160558

: home - 01363 877803

: email - [jomcdphysio@gmail.com](mailto:jomcdphysio@gmail.com)

: website - [jomcdougallphysio.com](http://jomcdougallphysio.com)

# Painful Feet?

## Viv Pulford Foot Health Practitioner

Diploma in Foot Health,  
and BSc in Adult Nursing.

Tel No 01884 861306 or  
07827 779559

Nail Cutting and filing  
Corn Callus Removal  
Deal with Fungal Infections / Thickened Nails  
Discounts for two or more people in same house

For treatment in the comfort  
of your own home

# Abigail's Beauty Retreat

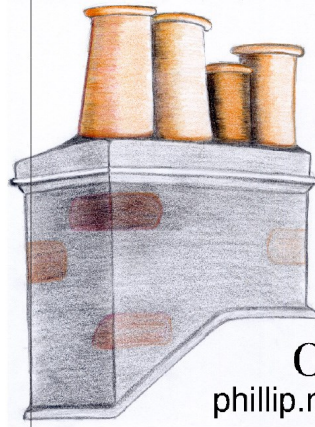
Beauty ♥ Massage ♥ Holistic

**07565 768386**

I'm Abi a fully qualified beauty therapist. I offer a wide range of treatments with a friendly professional service. I enjoy all aspects of my job, as everyday holds something new. I look forward to welcoming you to my Salon.

[abigailbeautyretreat@gmail.com](mailto:abigailbeautyretreat@gmail.com)

Lapford, EX17 6PZ



# Chimney Sweep

All work insured | CRB checked  
Certificate of sweeping | Clean service  
Discount for multiple chimneys

**Phill Melville**  
philmelville.com

**01363 877411**  
phillip.melville@googlemail.com

# CMP ELECTRICAL SERVICES

TESTING AND INSPECTING  
WIRING ALTERATIONS  
REWIRES  
RENOVATIONS  
NEW BUILDS  
FAULT FINDING  
DOMESTIC  
RESIDENTIAL  
COMMERCIAL  
AGRICULTURAL



ABLE TO UNDERTAKE AND CERTIFY ALL ASPECTS OF ELECTRICAL WORKS

**CONTACT 07702 430023**

**CMPELECTRICAL@HOTMAIL.COM**

# F. J. STEVENS & SON Monumental Masons



Memorials in Granite - Marble - Slate & Stone  
New Memorials - Renovations - Additional Inscriptions  
Home visits - Free estimates & brochure on request

For a caring personal service call our family run business which covers all of Devon

Crediton 01363 776321  
Mobile 07850128413  
Email [stevenscrediton@yahoo.co.uk](mailto:stevenscrediton@yahoo.co.uk)



Workshop: Albert Road, Crediton, EX17 2BX



*Dining Solutions Direct*

*Gourmet Fishmonger & Butcher*

Gold Medal Winners 2021 - Taste Of The West Awards! Congratulations to our butchery team

## LUXURY DINING AT HOME

With Dining Solutions, Eating in is always a dining out experience

## LET US DO THE WORK

We have the products you will LOVE ❤️

## WONDEFULLY PREPARED

Always fresh, always full of flavour

Frozen at source lock in all the flavour and nutrients

Please visit our website

[WWW.DININGSOLUTIONSDIRECT.COM](http://WWW.DININGSOLUTIONSDIRECT.COM)

TO ORDER AT ANY TIME


CALL SHANAN ON 07971 651888 or

EMAIL [SHANAN.DSD@GMAIL.COM](mailto:SHANAN.DSD@GMAIL.COM) or

ADD SHANAN TO COMMENTS BOX AT CHECKOUT

For latest news and updates find us on



St. Boniface   
Veterinary Clinic 

We are a friendly mixed practice with dedicated Farm, Equine and Small Animal teams. We aim to offer you a professional and highly skilled service from our branches in Crediton, Tedburn and Cheriton Bishop.



- Modern, purpose built, well equipped practice with keyhole surgery facilities.
- Large Reception area with separate dog and cat seating areas and kennelling.
- Preventative health care plans allowing significant cost saving and budgeting.
- Imaging suite including radiography, ultrasound and 3 different sized endoscopes.



- Complete farm services, including embryo transfer.
- Regular farmer meetings and training including our new Herdsman course.
- Medicine drop offs by arrangement.
- Annual farm health reviews.



- Equine surgical facilities and hospitalisation.
- Lameness investigations.
- Endoscopy and imaging.
- Preventative Healthcare Plans.



- Mobility assessments with dedicated rehab vet.
- Acupuncture, and other complementary therapies.
- Hydrotherapy - in house underwater treadmill.
- Tailored veterinary physiotherapy plans.



**01363 772860**

[www.stbonifacevets.co.uk](http://www.stbonifacevets.co.uk)

**Lapford Lodge  
Boarding Kennels and Cattery**

The new owners Neil and Jade and their young family will be pleased to welcome old and new canine and feline customers.

Fully licensed premises ensuring your pet is not only well cared for, but safe. A secure pet is a happy pet.

Doggy Daycare now available.

Telephone: 01363 83414 or email:  
[neilmanning1973@gmail.com](mailto:neilmanning1973@gmail.com)

**A. White & Sons  
Funeral Directors**

Albert Road, CREDITON,  
Devon. EX17 2BZ

**(01363) 772043**

Email: [whitesfs@btconnect.com](mailto:whitesfs@btconnect.com)

*Members of the N.A.F.D. and S.A.I.F.  
Prepayment Plans Available*



**Jonathan Wood Veterinary Surgeon Ltd.**  
01363 772319  
[www.jwoodvet.co.uk](http://www.jwoodvet.co.uk)  
24hr Emergency Service.

As an RCVS accredited practice, we provide a friendly, caring, professional service for companion animals, equine and farm patients.

We offer hydrotherapy and rehabilitation, modern ultrasound equipment, in house laboratory service and much more.

For full details visit our website.

We are proud to be accredited by the international cat care organisation as silver level cat friendly clinic.

**DARREN  
CHAPMAN  
ELECTRICIAN**

**NEED AN ELECTRICIAN**

- Rewires
- New Builds
- Alterations
- P.A.T. Testing
- New Consumer Units
- TV/BT Sockets

[dpcelectricals@hotmail.co.uk](mailto:dpcelectricals@hotmail.co.uk)

**MOB: 07825 630643 TEL: 01363 85625**



**Stove Centre**

01769 574411

**German Electric Radiators  
Available from stock**



**Highly Efficient  
Thermostatic  
24hr 7 day  
Programmability  
in every room**

**[www.stovecentre.co.uk](http://www.stovecentre.co.uk)**  
Unit 2 Horsepond Meadow, South  
Molton, Devon EX36 4EJ

**EGGESFORD  
CROSSING  
CAFÉ**

A Dog Friendly Café situated in  
Eggesford Station Yard

**Open Thursday, Friday and Saturday  
9am-2pm, serving our  
breakfast menu till 12.30pm**

Every Thursday evening is  
Pizza night (eat in or takeaway)  
Every Friday evening is  
a booking only,  
pre ordered dinner menu

**Please follow our Facebook page or  
give us a call for more details.  
01769 581427 / 07940 157555**



**We look forward to  
seeing you soon!**





**Bytes  
Computers**

01100010 01111001 01110100 01100101 01110011

Prompt, Reliable, Low-Cost Service

No Fix - No Fee

PC, Laptop & Apple - Repairs & Upgrades

New & Reconditioned Computers

Ongoing Support for Home or Business

Networks & Servers - Broadband & VoIP Telephones



EST. 2004

[www.bytescomputers.co.uk](http://www.bytescomputers.co.uk) 01363 82842

[help@bytescomputers.co.uk](mailto:help@bytescomputers.co.uk) 07906 298739



*Beccy Fletcher  
Seamstress*



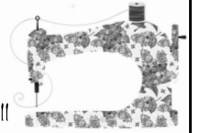
Alterations and Repairs

Curtains

Dressmaking

Embroidery

Upholstery



Contact: 07791 989142 / 01363 884211



Claire Eva Shepherd

**Home Visiting  
Mental Health Support**

Covering Exeter & Mid-Devon  
Offering Counselling & Advocacy

[www.claireevashepherd.co.uk](http://www.claireevashepherd.co.uk)

E. [claireevashepherd@gmail.com](mailto:claireevashepherd@gmail.com)

M. 07841 474398

## TURNER FRAMES

**Peter Turner, friendly and professional picture framer**

Mount Cutting-Framing-Box Framing-Glazing-Repairs

Call me for a free no obligation quote

No job too big or too small

Locally based studio in Eggesford

**Tel: 01769 581615 Mobile: 07802 256349**

**Email: [pcturner71@gmail.com](mailto:pcturner71@gmail.com)**

 **LAPFORD CROSS**  
MOT & SERVICE CENTRE

**EX17 6QT**

**TEL: 01363 83373**

Our professional workmanship is available  
in all of the following disciplines

MOT class 4 & 7 (motorhomes & transits)

Servicing

Diagnostics

Air conditioning

Car sales

Tyres

Exhausts

Batteries

We offer a local vehicle collection service or  
courtesy cars for your convenience

ATA & Bosch Accredited Diagnostic Technicians

**[www.lapfordcrossgarage.co.uk](http://www.lapfordcrossgarage.co.uk)**

the  
**Good Garage Scheme** 

## **DOORSTEP MILK DELIVERY SERVICE IN LAPFORD**



**KELLAND  
DAIRY**

**Free range pasteurised**

**Whole Milk**

**doorstep refills**

**Monday Evenings**

**Between 4 - 8pm**

**Thursday Mornings**

**Before 7.30am**

Please call 01363 779134 or  
email [milk@kellanddairy.co.uk](mailto:milk@kellanddairy.co.uk)  
for more information.





If you would like a last resting place  
in beautiful countryside  
overlooking Dartmoor  
phone 01647 24382 and speak to  
Julie or Martin Chatfield  
[www.crosswayswoodlandburials.co.uk](http://www.crosswayswoodlandburials.co.uk)



**TUX**



Quality Work By Fully Qualified Tradesman  
All Electrical Work Undertaken  
Domestic, Industrial, Commercial  
& Agricultural Installations  
Fully Compliant to Part P Building Regulations  
All Work carried out to  
18<sup>th</sup> Edition Wiring Regulations  
Over 30 Years Experience in electrical contracting  
24 HOUR EMERGENCY CALL OUT  
Tel. 01363 881002 Mob. 07710 673270  
[www.tuxelectrical.co.uk](http://www.tuxelectrical.co.uk)



**KERRY  
PLANT**  
*Complete Excavation*

<i>Site Works</i>	<i>Septic Tanks</i>
<i>Driveways</i>	<i>Treatment Plants</i>
<i>Drainage</i>	<i>Retaining Walls</i>
<i>Foundations</i>	<i>Stone Walling</i>
<i>Landscaping</i>	<i>Printed Concrete</i>

**Mobile: 07976 641606**  
**Email: [elwynkerry@hotmail.com](mailto:elwynkerry@hotmail.com)**



**LOWERFIELD HOUSE**  
bed and breakfast

01363 507030  
[enquiries@lowerfieldhouse.co.uk](mailto:enquiries@lowerfieldhouse.co.uk)  
[www.lowerfieldhouse.co.uk](http://www.lowerfieldhouse.co.uk)

Lapford  
CREDITON  
EX17 6PU

**KEN HOGAN**  
**TREE, HEDGE & GARDEN SERVICES**

**Fully Insured & NPTC Qualified Tree Surgeon**



**Crown Reductions, Felling,  
Dismantles, Storm Damage, Dead  
Wooding, Stump Grinding, Hedge  
Trimming, Logs, Wood Chip.**

**24 Hour Emergency Call Out.**

**[www.kenhogantreeservices.co.uk](http://www.kenhogantreeservices.co.uk)**

**[kenhogantreeservices@hotmail.com](mailto:kenhogantreeservices@hotmail.com)**

**01363 860193 or 07946 606093**

**Kevin  
Osborne**



**City &  
Guilds**  
NVQ Qualified

Specialists in Digital  
Satellite Systems

Aerial &

- Aerial Upgrades
- All aspects of installation
- Extra TV Points
- TV Wall Mounting Service
- Existing Aerial & Satellite Problems Solved
- DAB/FM Radio Aerials
- Free Telephone Advice
- Free Quotation Services

**01363 777190**                      **07841 644395**  
[kev@kevinosborneaerials.co.uk](mailto:kev@kevinosborneaerials.co.uk)

**[www.kevinosborneaerials.co.uk](http://www.kevinosborneaerials.co.uk)**

Ashridge Court  
Farm, North  
Tawton, EX20 2DH



07872 598 659  
info@ashridge-  
court.co.uk

## Grass Fed Beef Boxes

£60 for 6kg  
£120 for 12.5kg

£25 for 3kg Stew Packs  
Joints and Steaks also Available

Delivery Available

## MOBILE UNISEX HAIR STYLIST

WITH OVER 30 YEARS' EXPERIENCE

\*

### HOME VISITS

to Lapford and surrounding areas

\*

Call JACKIE on 07771 986140  
or email: jawhite125@btinternet.com

## The Devonshire Dumpling

Family Pub and Dining

Homemade Food



Covid Safe Environment

Please call 01363 85102 to book or email  
thedevonshiredumpling@gmail.com

See website for opening hours:  
www.devonshire-dumpling.com

MARTIN DOWN - 07812 513383

GARDEN MACHINERY/ATV  
SERVICE & REPAIR

NEW STIHL/VIKING MACHINES TO ORDER



SECOND-HAND MACHINES

COLLECTION AND  
DELIVERY  
SERVICE AVAILABLE



## Trevor Smith Boiler Services

Servicing,

Maintenance & Repairs

Oil Boilers, Agas &

Rayburns

01837 83530

07814 366055

smithboilerservices@hotmail.co.uk



Registered Technician

gs gilbertstephens<sup>LLP</sup>  
SOLICITORS

# When you need advice, we have the solutions

Call our Okehampton office on **01837 51 21 00**  
Rosemary House, Market Street, EX20 1HN

Call our Crediton office on **01363 77 55 66**  
Manor Office, North Street, EX17 2BR

Call our Exeter office on **01392 42 42 42**  
15-17 Southernhay East, Exeter, EX1 1QE

Visit us online for more information  
**[gilbertstephens.co.uk](http://gilbertstephens.co.uk)**

Gilbert Stephens LLP is authorised and regulated by the Solicitors Regulation Authority (no: 536070).



For all your domestic, agricultural and commercial pest control needs.

From Rats and Mice to Wasps and Fleas, contact me for a quick, convenient solution to pest problems.

I am fully qualified and insured.

Based in Zeal Monachorum covering all of Mid Devon and surrounding areas.

www.middevonpestcontrol.co.uk  
Tel. 07725 520466 / 01363 881473

Email: enquiries@middevonpestcontrol.co.uk



## Blackberry Lane

Half a mile out of Lapford on the Chawleigh road, selling fresh and tasty fruit and vegetables - all home-grown

Come and see, phone, email, check out our website or follow us on Twitter to discover what's ready!

Open Tuesday - Saturday 9.30 to 6.00 (5.00 in winter)

Dave and Val Taylor, Wilanson, Lapford, EX17 6LY  
01363 83389 07792 592068 @Blackberry\_Lane  
blackberrylane@gmail.com www.blackberrylane.co.uk

## Broomsmead Surfacing Ltd

### Tarmac & Groundwork Specialists

Phone: 01363 83604 | Mob: 07813 763722 | f/broomsmeadsurfacing  
Email: broomsmeadtarmac@gmail.com | Web: www.broomsmeadsurfacing.com

- Tarmac & Concrete Works
  - Slab Laying / Patios / Brick Paving
  - Site Clearance & Landscaping
  - VLS tar & chip surfaces
  - Install Septic Tanks / Drainage / Footings
  - Equine Arenas / Round Pens / Gallops
- Constructing New or Renovating Existing



## STEVE WREFORD GARDEN MAINTENANCE

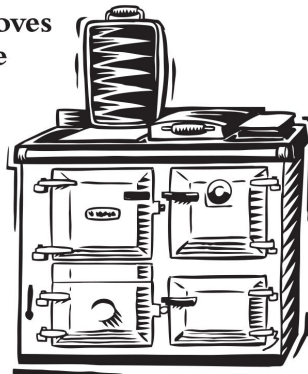
- |                  |                        |
|------------------|------------------------|
| Lawn mowing      | Hedge cutting          |
| Strimming        | Turf laying            |
| Fencing          | Patios and Decking     |
| Pressure washing | General garden tidying |
- Any other jobs considered



Tel: 01363 884269 (ans available)  
Mob: 07918866675

## Rangemoors. The home of Stoves Range Cookers and Renewables.

- Wood & Multifuel Stoves
- Cookers & Cookware
- Flues & Chimneys
- Spares & Accessories
- Logs & Multifuels



Find us outside Winkleigh on the A3124 Torrington road.  
Open Mon to Sat, 9 - 5pm.

Call 01837 680068  
www.rangemoors.co.uk

The Airfield, Torrington Road, Winkleigh, Devon EX19 8DW  
HEATING • COOKING • LIVING



## PHYSIOWORKS

With Green Massage Therapy

Chartered Physiotherapist - specialist in sports injuries (9 years experience in professional sports)

- Injury management & rehabilitation
- Pre / post surgery rehabilitation
- Sports & Remedial Massage
- Western Medical Acupuncture
- Clinical Pilates
- Kinesiology Taping

Common conditions treated:

- Back, neck and shoulder pain
- Sciatica / whiplash
- Tennis / Golfer's elbow
- Runner's knee
- Repetitive strain injury

Helen Greensmith BSc(Hons), MCSP, AACP, HCPC Reg

Tel: 07733227732 [www.physioworks.today](http://www.physioworks.today)

Ebenezer Cottage, Lapford, Crediton. EX17 6PZ.

# PENNYMOOR TIMBER LTD

For all your timber requirements since 1969



## Timber

Sawn, Planed, Treated & Incised  
Joinery Grade & Long Lengths

Fencing/Panels & Gates

Sheet Materials • Roof Sheeting

Cladding & Guttering

Decking • Raised Beds



# 01363 866262



email: pennymoortimber@yahoo.co.uk

Web : pennymoor-timber.co.uk



# EDWORTHY COMPUTING LTD

Unit 1, Oakfield, Bow, Crediton



Computer & Laptop repairs & virus removal

New & Used computer & laptop stockists

IT support & Website design



Remote Support

Printers & Consumables

Prompt & Reliable Call-out service

## t: 01363 881157

e: sales@edworthycomputing.co.uk

www.edworthycomputing.co.uk



A warm & welcoming small school, with strong community links, for children aged 2-11 years

- Nursery Class
- Out of School Club
- Part of the high performing Chulmleigh Academy Trust, enabling seamless transition to secondary school



w: www.lapford-primary.devon.sch.uk t: 01363 83292

e: admin@lapford-primary.devon.sch.uk



# CHULMLEIGH COLLEGE

## 'Nothing But Our Best'



w: www.chulmleigh.devon.sch.uk t: 01769 580215

e: admin@chulmleigh.devon.sch.uk



## THANK YOU

Thank you to everyone involved in organising the display of poppies in the village. The Church Green looked absolutely stunning.



I have a small number of 2021 dated poppy pins available. If anyone would like one, please contact me.

**Caroline Noon**  
**Lapford Poppy Appeal Organiser**

## TWO ROAD CLOSURE NOTIFICATIONS

1. From Devon County Council

ROAD TRAFFIC REGULATION ACT 1984 SECTION 14 THE COUNTY OF DEVON (TEMPORARY RESTRICTION) (ROAD FROM LAPFORD CROSS TO BARRIS HOUSE, LAPFORD) NOTICE 2021 TEMPORARY PROHIBITION OF THROUGH TRAFFIC & PARKING DEVON COUNTY COUNCIL hereby give NOTICE that:

From **MONDAY 13 DECEMBER 2021 for a maximum of 5 days Until TUESDAY 14 DECEMBER 2021** (both dates inclusive) No person shall cause or permit any vehicle to proceed or wait on the sections of Affected Roads.

Roads affected - **ROAD FROM LAPFORD CROSS TO BARRIS HOUSE, LAPFORD**, 105M FROM A377 J/W ROAD FROM LAPFORD CROSS TO BARRIS HOUSE - APPROX 375M SOUTH OF POPES LANE J/W ROAD FROM LAPFORD CROSS TO BARRIS HOUSE.

The alternative, signed, route for vehicles will be via - A377 NYMET BRIDGE CROSS, B3042 ROAD FROM EGGESFORD STATION TO HOLLOW TREE CROSS, B3042 ROAD FROM HOLLOW TREE CROSS TO PORTSMOUTH ARMS CROSS, POUNDSFORD CROSS TO FORCHES CROSS, ROAD FROM LOWER FORCHES CROSS TO HIGHER FORCHES CROSS AND VICE VERSA.

This temporary restriction is considered necessary to enable - NETWORK RAIL BRIDGE SURVEY WORKS

For additional information contact: NETWORK RAIL Telephone: 03700500972 Dated: MONDAY 13 DECEMBER 2021 Meg Booth Chief Officer of Highways, Infrastructure Development & Waste Devon Highways Devon County Council County Hall Exeter EX2 4QD Ref: TTRO2142250.

2. From South West Water on behalf of the Kier Group.

**Road from Barris House to Orchard Cross, Lapford, Devon**  
**Work Ref: LM501NC8957921**

South West Water has applied for a road closure to complete utility works outside Prospect Cottage. These works, subject to approval from Devon Highways, will take place between **24/01/2022 and 01/02/2022**.

All efforts will be made to maintain access to properties within the area of the closure and minimise disruption.

If you require further information, please call us on 01726 224400 between 9:00am and 5.00pm (Mon-Fri) or contact the Helpline on 0344 346 2020 at all other times.

Thank you for your patience and understanding, we'll make sure the work is completed as quickly as possible to minimise any disruption.

Information supplied by Lapford Parish Council.

## IF I KNEW

If I knew it would be the last time  
That I'd see you fall asleep,  
I would tuck you in more tightly  
and pray the Lord, your soul to keep.

If I knew it would be the last time  
that I see you walk out the door,  
I would give you a hug and kiss  
and call you back for one more

If I knew it would be the last time  
I'd hear your voice lifted up in praise,  
I would video tape each action and word,  
so I could play them back day after day.

If I knew it would be the last time  
I could spare an extra minute  
to stop and say 'I love you,'  
instead of assuming you would KNOW I do.

If I knew it would be the last time  
I would be there to share your day,  
Well I'm sure you'll have so many more,  
so I can let just this one slip away.

For surely there's always tomorrow  
to make up for an oversight,  
and we always get a second chance  
to make everything just right.

There will always be another day  
to say 'I love you,'  
And certainly there's another chance  
to say our 'Anything I can do?'

But just in case I might be wrong,  
and today is all I get,  
I'd like to say how much I love you  
and I hope we never forget.

Tomorrow is not promised to anyone  
young or old alike,  
And today may be the last chance  
you get to hold your loved one tight.

So if you're waiting for tomorrow,  
why not do it today?  
For if tomorrow never comes,  
you'll surely regret the day,

That you didn't take that extra time  
for a smile, a hug, or a kiss  
and you were too busy to grant someone,  
what turned out to be their one last wish.

So hold your loved ones close today,  
and whisper in their ear,  
Tell them how much you love them  
and that you'll always hold them dear

Take time to say 'I'm sorry,'  
'Please forgive me,' 'Thank you,' or 'It's okay.'  
And if tomorrow never comes,  
you'll have no regrets about today.

## REMEMBRANCE POPPIES

Can I say a huge "well done" and "thank you" for the wonderful effort that went into the display of poppies along the Church wall and surrounding fence - it was absolutely stunning and very effective for Remembrance.

It was lovely to see so many people at the War Memorial on Sunday 14th to pay respect to the fallen.

Thank you to everybody involved.

Grace



## PUZZLE CORNER ANSWERS NOVEMBER 5<sup>TH</sup> QUIZ

- 1 Gunpowder, treason and plot.
- 2 1605.
- 3 King James 1.
- 4 The Houses of Parliament.
- 5 36.
- 6 Robert Catesby.
- 7 Guy Fawkes.
- 8 A penny.
- 9 Pyrotechnic.
- 10 Ottery St. Mary.



Step-up No 2  
Recruiting a second  
team of adult  
volunteers for  
Friday evenings  
starting New Year

Success with Thursday  
evening Youth Club is  
resulting in a separate  
evening for 13+, so please  
more adult volunteers are  
needed.



Contact:

[steve.keable@btinternet.com](mailto:steve.keable@btinternet.com)

07967 655045

## THOUGHTS FROM THE ARK

For many people Christmas is filled with dread instead of delight. Author Jon Walker writes this: "I'm sitting in a fast food restaurant observing a young girl celebrating an early Christmas with her mother. Her presents are spread out across the table and she just says, "I miss you, Mummy," "I miss you too," says her mother. Beyond the table .... a woman casually, but carefully watches them both. Using my journalist's eye, I put two and two together. The watching woman is a social worker supervising a structured visit for a mother and child, who are doing their best to celebrate Christmas ..... a few minutes later foster parents arrive to take the little girl home. The mother leaves alone.



There is a darker side to Christmas we rarely acknowledge. We create this fantasy that seldom matches reality, even in the best of homes ..... many Christmas memories are full of tension, not tinsel ..... the holidays are just another excuse for Mum to get drunk or Dad to be with his new family .... yet another reminder that the one we love is far away or perhaps never coming back. The suicide rate is extraordinarily high in December, depression is common, more people hurt at Christmas than we initially imagine.

For those tired of the hallow hope of Christmas, the good news is, God is with us. Jesus came to earth to bring good news, for all people."

Regardless of your situation, Christmas is the best gift you'll ever get because it's the costliest gift you'll ever receive because it cost Jesus His life. It's the only gift that lasts forever and it's the only one you can enjoy for the rest of your life.

Taken from UCB Word for Today notes.

It's been another strange year. I think we were all hoping things would get back to some sort of normal, if there ever was such a thing. The ARK has been getting busier, which is very encouraging. Upstairs we have lots of lovely books for children and adults to borrow and people are beginning to visit and take books away, as well as leaving books they no longer need.

The Foodbank continues to support people with food parcels and we are very grateful for the added support we are getting from Morrisons in Crediton.

The ARK will be closed on Friday 17 December and reopen on Friday 7 January, 2022.

If you enjoy singing and would like to join us for carols around the village, we will be meeting at The ARK on Wednesday, 22 December, at 6.30pm, weather permitting, ending back at The ARK for hot chocolate and mince pies. You will need to wrap up warm and bring a torch, it helps to see the carol sheets.

Thank you to all who support The ARK and Foodbank.

The ladies at The ARK wish everyone a happy Christmas.

## AVIAN FLU

**In a joint statement the Chief Veterinary Officers for England, Scotland and Wales said:**

Following a number of detections of avian influenza in wild birds across Great Britain we have declared an Avian Influenza Prevention Zone across the whole of Great Britain. This means that all bird keepers must take action now to prevent the disease spreading to poultry and other domestic birds.

Whether you keep just a few birds or thousands, you are now legally required to introduce higher biosecurity standards on your farm or small holding. It is in your interests to do so in order to protect your birds from this highly infectious disease.

The introduction of an AIPZ follows a decision to raise the risk level for avian influenza incursion in wild Birds in Great Britain from 'medium' to 'high'. For poultry and captive birds the risk level has been raised from 'low' to 'medium' at premises where biosecurity is below the required standards, but remains 'low' where stringent biosecurity measures are applied.

The AIPZ now in force across GB, does not include a requirement to house birds. However, this is being kept under constant review. With the increased risk of Avian Influenza during the winter, the need to include a mandatory housing requirement in the AIPZ may arise. Further disease control measures will be based on the latest scientific evidence and veterinary advice.

**The Avian Influenza Prevention Zone (AIPZ) means bird keepers across the country must:**

- Keep domestic ducks and geese separate from other poultry;
- Ensure the areas where birds are kept are unattractive to wild birds, for example by netting ponds, and by removing wild bird food sources;
- Feed and water their birds in enclosed areas to discourage wild birds;
- Minimise movement into and out of bird enclosures;
- Cleanse and disinfect footwear and keep areas where birds live clean and tidy;
- Reduce any existing contamination by cleansing and disinfecting concrete areas, and fencing off wet or boggy areas;
- Keep free ranging birds within fenced areas, and ponds, watercourses and permanent standing water must be fenced off (except in specific circumstances, e.g. zoo birds).

The prevention zone will be in place until further notice and will be kept under regular review as part of the government's work to monitor and manage the risks of bird flu.

Poultry keepers and members of the public should report dead wild birds to Defra's national dead wild bird helpline on 03459 33 55 77 (please select option 7) and keepers should report suspicion of disease to APHA on 03000 200 301. Keepers should familiarise themselves with our avian flu advice.



## CHULMLEIGH FLORAL ART CLUB

There are no meetings of Chulmleigh Floral Art Club in December or January but we will be meeting for a Christmas Lunch on 3<sup>rd</sup> December at The Royal Hotel in Bideford.

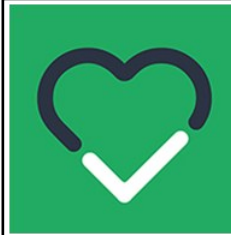
We would like to thank all members and friends of the club for their support over recent months and to take this opportunity to wish you A Very Happy Christmas and a healthy and prosperous 2022.

Diary date: 16<sup>th</sup> February 2022  
Katie Turley – Flowers from the Florist.

For further information please contact:  
Heather Russell 01769 581258  
Joan Rowland 01769 581241



## JOIN THE CREDITON HEART PROJECT A SMALL CHARITY WITH BIG PLANS



The Credition Heart Project is a small local charity with some big plans. Last year we launched the Credition In&Around community website to promote our brilliant area and our next aim is to develop a new multi-use building offering all sorts of exciting opportunities for local people. But to manage these ambitious projects we need more people to join our team of trustees.

Since 2018 the Heart Project has have been working to support the people of Credition and the surrounding villages. We believe that as Credition expands it should have the help it needs to keep its character and avoid becoming a dormitory town to Exeter. Our mission is 'to keep the heart in Credition'.

Our trustees come from a range of backgrounds, with different interests and skills, but we all care deeply about our community and enjoy working together to get things done. We have already achieved a huge amount but with more people we could do so much more.

Do you enjoy working in a team or is networking your skill? Perhaps you have been a trustee or governor before and could share your learning and experience. The project to create a new building has many facets particularly in a post Covid, environmentally conscious world. Do you have the skills to help with that?

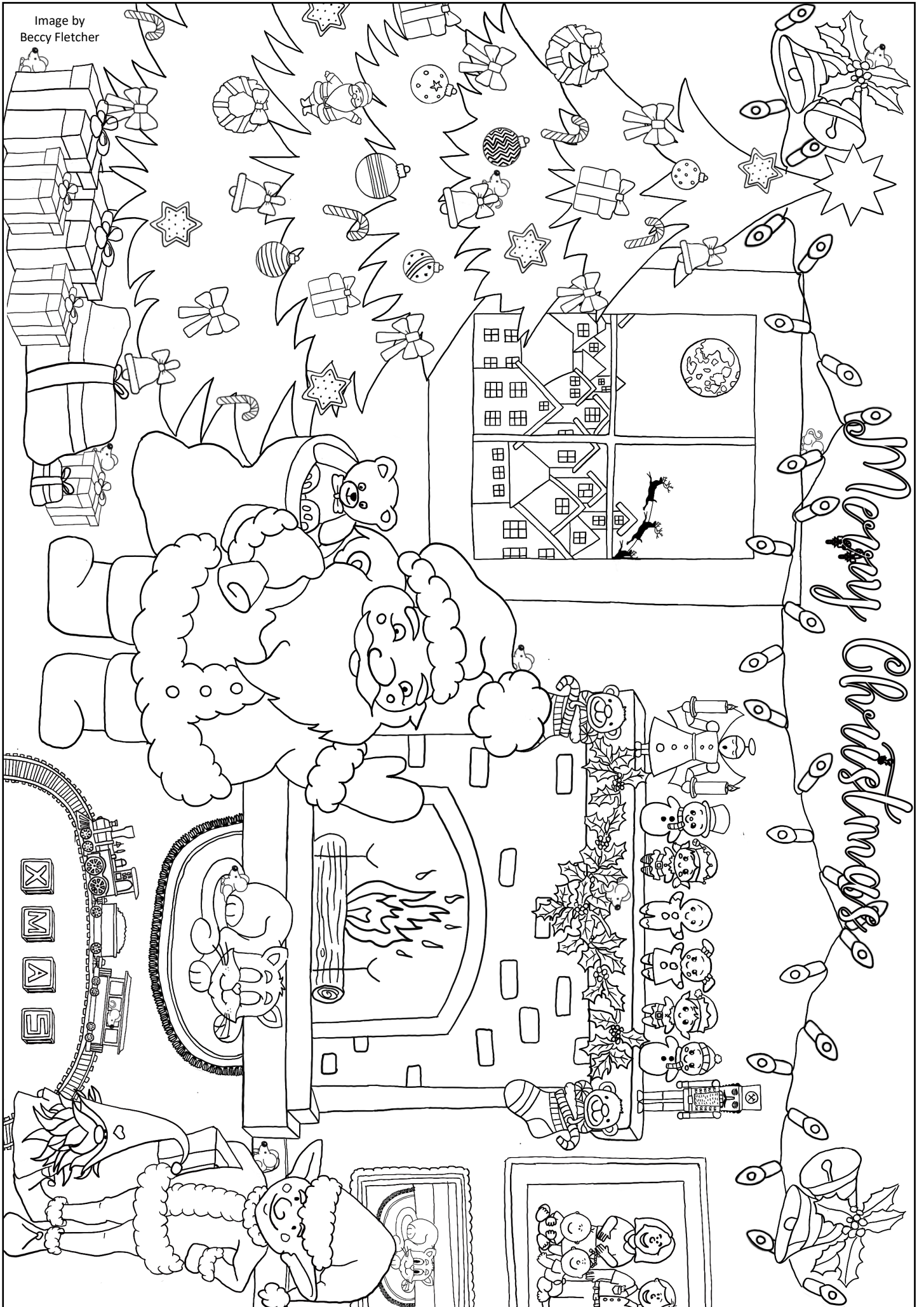
The pandemic has created huge challenges but also many opportunities, and we need your energy, ideas and experience to help us take full advantage of these and ensure our local communities recover and thrive.

Have a look at our website [www.creditoninandaround.co.uk](http://www.creditoninandaround.co.uk) and follow us on social media [www.facebook.com/Creditioninandaround](https://www.facebook.com/Creditioninandaround)

To find out more about the trustee role please email our Chair, Rosemary Stephenson [rosemary@creditionheart.org](mailto:rosemary@creditionheart.org) to arrange an initial chat.

The Credition Heart Project welcomes applications from people from all backgrounds, regardless of gender, language, race, religious beliefs, ethnicity, age, disability, social class or sexual orientation.

Image by  
Becky Fletcher





## TO CONTACT THE EDITOR

### Write to:

Mrs. Beccy Fletcher, 36 Orchard Way, Lapford, Crediton, EX17 6PR

Tel: (01363) 884211 or 07791 989142

E-mail: lapfordlookout@gmail.com

By hand: Use the box in The Orchard Centre or the Editor's letterbox

### Deadline for inclusion in the next issue:

**6.00 pm on the 10th December for inclusion in January issue**

*Contributions are welcome, to be used at the Editor's discretion.*

*Flyers and Inserts must be approved by the Editor prior to publication and shall only be included at the discretion of the Editor and editorial policy.*

*The views in this newsletter do not necessarily represent the views of the editorial team.*

*© All information in this newsletter is copyright and may not be reproduced without the permission of the Editor.*

MERRY CHRISTMAS  
AND A  
HAPPY NEW YEAR  
FROM EVERYONE AT  
THE LAPFORD LOOKOUT



## NEED TRANSPORT TO YOUR MEDICAL APPOINTMENT?



Lapford Voluntary Car Aid 2011

Lapford Voluntary Car Aid provides the residents of the village (including friends and family staying with you) with courteous, reliable, fully insured drivers to get you to your appointment safely and on time. Bookings can be made by telephoning Grace Hill on 83178. Current fares for the services covered are as follows:

- Bow Medical Centre - £5
- Chulmleigh Dental Practice - £5
- Chulmleigh Health Centre - £5
- Crediton (Breast Screening) - £6
- Crediton (Covid jab) - £6
- Crediton Community Hospital - £5
- Morchard Bishop Surgery - £3
- Redlands Health Centre - £6
- Winkleigh Surgery - £5

We have LVCA drivers available to take anyone to have their Covid/flu vaccinations. Please contact Grace as above.

Don't Miss the  
**DEADLINE!**

**10th December**

## NATIONAL BLOOD SERVICE



Donations can be made at  
Boniface Centre, Crediton,  
on Tuesday 1st March  
at 13:10 to 15:15



Call the donor helpline on 0300 123 23 23  
for more information or to check for cancellations

*Do something amazing - Give Blood!*

**Libraries  
Unlimited**

## LIBRARIES UNLIMITED BOOKS ON WHEELS

Do you have difficulty in getting to Crediton Library and carrying heavy books home to read? Or even reaching the mobile library? Would you like us to collect and deliver talking books, or large and normal printed ones of the kind that you enjoy, directly to your home free of charge? If so, I will be happy to help.



**Peter Westcott - Telephone: 01363 83525**

## DEVON MOBILE LIBRARY STOPS

**Devon  
Libraries**

### Lapford

Orchard Way: 13.30-14.55

School: 15.00-16.00

### Nymet Rowland

Opposite Village Hall: 12.30-12.50

Every 4 weeks on Tuesdays  
December 7th.



The Ark is open on  
**Tuesdays and Fridays**  
**11.00 to 2.00.**  
Arrangements can be  
made for access at other  
times

**BOOKS  
UPSTAIRS**  
COME AND  
BROWSE

● TO BORROW  
● TO SWAP  
● OR TO KEEP



# IN CASE OF AN EMERGENCY IN LAPFORD



**KEEP CALM**  
AND FOLLOW THE  
**EMERGENCY PLAN**

**Parish Council Contact:**  
**Sue Briant-Evans - 01363 83763**

**Village Contact:**  
**Roy Trevaskis - 01363 83742**

**South of Taw/A377 Contact:**  
**Sue Briant-Evans - 01363 83763**

## USEFUL TELEPHONE NUMBERS

- Emergency numbers ~ 999 or 112
- Childline ~ 0800 1111
- Churches House Action Team ~ 01884 255606
- Citizens Advice Bureau ~ 03444 111 444  
CAB Crediton ~ 01363 776210 (M, W, Th, 9-3)
- Crediton Ring and Ride ~ 01363 773303
- Crimestoppers ~ 0800 555 111
- Dog Fouling/Fly Tipping 01884 255255
- Environment Agency Floodline ~ 0845 9881188
- Farming Community Network ~ 03000 111 999
- Gas Emergency ~ 0800 111999
- Highways (roads/lights/potholes) ~ 0345 155 1004
- Mental Health Support Out of Hours ~ The Moorings  
@Devon ~ Exeter: 07990 790 920 or  
Barnstaple: 07850 927 064
- NHS for non urgent medical needs ~ 111
- Patient Participation Group ~ Bill Graham ~ 01363 83047
- Police Non-emergency ~ 101
- Power cut ~ 105 or 0800 6783 105
- RSPCA ~ 0300 1234 999
- Safeguarding concerns and Social Services ~ 0845 6000388
- Samaritans ~ 116 123, 01271 374343, 01392 411711
- SHOUT ~ Text 85258 for help from crisis volunteers
- Water leaks or burst mains ~ 0800 230 0561



## LAPFORD OUTREACH POST OFFICE



### OPENING HOURS:

Monday 9.00 - 12.30  
Wednesday 9.00 - 12.30  
Friday 9.00 - 12.30

## LAST POSTING TIMES AROUND THE VILLAGE

	<u>Mon-Fri</u>	<u>Saturday</u>
Eastington Cross	9.00p.m.	7.00 a.m.
Woodland Cottage	9.00 a.m.	7.00 a.m.
Industrial Estate	9.00 a.m.	7.00 a.m.
Highfield	4.00 p.m.	10.15 a.m.
Orchard Way	9.00 a.m.	7.00 a.m.
Saxtons	4.00 p.m.	10.15 a.m.
Morchar Road	5.00 p.m.	11.15 a.m.

In addition, items left at the Post Office during opening hours will be posted that day via North Tawton.

## LAPFORD PARISH COUNCIL, ETC

Cllr Peter Heal (Chair)	Ashlands, Lapford, EX17 6AE ~	Home - 01363 884277 / Office - 01363 775467 peter.heal@lapfordparishcouncil.org.uk
Cllr Sue Briant-Evans (Vice Chair)	Edgerley Cottage, Lapford, EX17 6AH	01363 83763 / sue.briantevans@lapfordparishcouncil.org.uk
Cllr Roy Andrews	Old Bakery, Park Road, Lapford, EX17 6QJ	07969 823256 / roy.andrew@lapfordparishcouncil.org.uk
Cllr David Davenport	Pleasant Cottage, Lapford, EX17 6PZ	01363 884236 / david.davenport@lapfordparishcouncil.org.uk
Cllr Julie Down	Rafters, Lapford, EX17 6QP	01363 83356 / julie.down@lapfordparishcouncil.org.uk
Cllr Pat Gowie	Honeysuckle Cottage, 1 Park Road, Lapford.	07722 426650 / pat.gowie@lapfordparishcouncil.org.uk
Cllr Stacey Lumsdon	~	07891 556884 / stacey.lumsdon@lapfordparishcouncil.org.uk
Cllr John Parsley	~	john.parsley@lapfordparishcouncil.org.uk
Cllr Alex Shapland	13 Highfield, Lapford, EX17 6PY	alex.shapland@lapfordparishcouncil.org.uk
Cllr Abigail Whittaker	~	abigail.whittaker@lapfordparishcouncil.org.uk
Parish Clerk - vacancy	~	clerk@lapfordparishcouncil.org.uk
District Cllr Clive Eginton	6 Moortown, Chawleigh, Chulmleigh, EX18 7EU	01769 580830 / ceginton@middevon.gov.uk
County Cllr Margaret Squires	Frostland Farm, Copplestone, EX17 5NY	01363 84337 / margaret.squires@devon.gov.uk
Mel Stride MP	House of Commons, London, SW1A 0AA	02072 197037 / mel.stride.mp@parliament.uk

NAME OF SOCIETY	CONTACT	TELEPHONE / EMAIL
<p><b>LAPFORD EMERGENCY RESPONSE TEAM - CORONAVIRUS LOCAL HELP</b></p> <p>Adventure Gaming            Beginners Ballroom Dancing            Banyu Hatten Aikido            Books on Wheels            Friends of Langannerie (twinning)            Friends of Lapford Mill            Friends of Lapford School            Heart for Lapford Strategy Group (H4L)            HOLD            Ladies of Lapford (LOL)            Lapford Allotment Society            Lapford Amateur Dramatic Society            Lapford and District Pre-school Playgroup            Lapford ARK            Lapford Association Football Club            Lapford Book Club            Lapford Choir            Lapford Community Church            Lapford Community Primary School            Lapford Congregational Church</p> <p>Lapford Dog Club            Lapford Emergency Action Plan Committee            Lapford Emergency Response Team            Lapford Foodbank            Lapford Handbell Ringers            Lapford High 5 (ages 7-12)            Lapford Gardening Club            Lapford Lookout            Lapford Meat Bingo            Lapford Pilates            Lapford Over 60 Club            Lapford Parish Church            Lapford Poppy Appeal Organiser            Lapford Project 2000            Lapford Regeneration Committee            Lapford Revel            Lapford Revel Volunteers            Lapford Victory Hall &amp; Lower Town Place            Lapford Village Archive            Lapford Village Market            Lapford Voluntary Car Aid            Lapford Youth Club            Lapford Youth and Playing Field Trust            Lapstock            Lower Town Place Gardening Group            Nymet Rowland Village Pump            Save Our Heritage Lapford            Springers 4's and under            The Friends of St Thomas of Canterbury</p>	<p>Mr Warren Clayburn            Mr Steve Munday            Mr Geoff Flather            Mr Peter Westcott            Mr Peter Henshaw            Mr Alex Gater            Mrs Kirsty Wensley            Secretary            Mr Bill Graham            Mrs Joy Quickenden            Mr Raymond Waldron            Mr Ian Wilkie            Mrs Lorraine Kigongo            Miss Briony Clinch            Mr Niall McAreavey            Mrs Jill Doe            Mrs Cat Seymour            Miss Briony Clinch            Mrs Clare Wilmott            Mr Peter Lacey</p> <p>Mrs Sara Thurgood            Mrs Sue Briant-Evans            Mr Alex Gater            Mrs. Briony Clinch            Mr Steve Munday            Mrs Cat Seymour            Mrs Trish Mumford            Mrs Beccy Fletcher            Mrs Jayne Grover            Steph Heard            Mr Ron Kercher            Mrs Joan Graham            Mrs Caroline Noon            Mrs Sue Briant-Evans            Mr Ian Hemsworth            Mr Alex Gater            ~            Mr Darren Crump            Mrs Jeanne Whittaker            Mrs Stacey Lumsdon            Mrs Grace Hill            Mr Steve Keable            Mr Roy Andrews            Mr Steve Keable            Mr Andy Epstein            Liz and Roland Smith            Mrs Donna Egan            Mrs Caroline Gilpin            Mrs Prue Lambert</p>	<p><b>07966 144772 / help@lapfordvillage.co.uk</b>  <b>Facebook: Help the Vulnerable in our Community (Lapford)</b></p> <p>01363 83095 / wmclayburn@gmail.com            07798 684225 /steve@lowerfieldhouse.co.uk            01363 83355 / bhaikido@googlemail.com            01363 83525 / pj.westcott@btinternet.com            01837 89070 / petehenshaw@yahoo.co.uk            07815 795918 / alex@lapfordmill.uk            07977 825814 / kirstywensley4@gmail.com            heart4lapford@aol.com            01363 83047 / bg4847@aol.com            01363 83245 / joyquickenden@gmail.com            01363 83894 / ednawaldron@btinternet.com            01363 83437 / i.wilkie45@btinternet.com            01363 83162 / lkigongo@catpreschools.co.uk            01363 83788            01363 83733 / lapfordafc@gmail.com            01363 83410 / sunnyside@jilldoe45.plus.com            01363 884432 / cathryn_seymour@outlook.com            01363 83666 / admin@lapfordcc.org.uk            01363 83292 / admin@lapford-primary.devon.sch.uk            01363 884230 /            lapfordcongregationalchurch@gmail.com            01363 83081 / info@lapforddogclub.co.uk            01363 83763 / susanbriantevans@gmail.com            07815 795918 / alex@lapfordmill.uk            01363 83788            07798 684225 / steve@lowerfieldhouse.co.uk            01363 884432 / cathryn_seymour@outlook.com            01363 83911 / james@mumfordj.plus.com            01363 884211 / lapfordlookout@gmail.com            07900 477247            07773 010512 / steph.instructor@talktalk.net            01363 83810 / lapfordover60@yahoo.com            01363 83047 / jemg47@aol.com            01363 83863 / lapford.pao@gmail.com            01363 83763 / susanbriantevans@gmail.com            01363 884460 / i.hemsworth@btinternet.com            07815 795818 / alex@lapfordmill.uk            revelvolunteers@gmail.com            07960 715553 / darrencrump99@hotmail.co.uk            01363 83068 / jeanne.whittaker@btinternet.com            07891 556884 / lapfordvillagemarket@gmail.com            01363 83178 / lvca2011.19@gmail.com            07967 655045 / steevekeable@btinternet.com            07969 823256 / r.andrews1950@icloud.com            07967 655045 / steve.keable@btinternet.com            amepstein55@gmail.com            01363 884446 / pump@incywincyweb.com            01363 83732 / donnaegan84@gmail.com            01363 83674 / caroline@gilpin.eclipse.co.uk            01363 83150 / pruelambert@yahoo.co.uk</p>



# The Puppet Nativity!

**Puppet Show followed by refreshments  
Tees, Coffee, Mulled Wine, Mince Pies and Cake!**

**Wednesday 22nd of December**

**Lapford Congregational Church**

**Doors open 5.30pm**

**Curtain up 6pm**



**Inspired, Created & Produced**

**by**

**The Children of Lapford Congregational Church**



**Donations in aid of  
The Church Window Fund**