



LAPFORD LOOKOUT



YOUR LOCAL MONTHLY NEWSLETTER

Year 24 Issue 4

April 2021

LAPFORD SCHOOL BAKE OFF



Lapford Primary School was looking for its star bakers. Children were asked if they had what it takes to whip up a tasty treat, could they muster up a scrumptious sweet something out of some sugar, eggs, flour and margarine, or were savoury snacks their speciality? If so, they were asked to get baking and send in pictures of their bakes. They could work with siblings and enter a bake as a family or work on their own. Their entry could be sweet or savoury - Victoria sponge to sausage rolls! Each child could only enter one bake and there were prizes for the star bakers. On your marks, get set, BAKE! And bake they did . . .



CONGREGATIONAL CHURCH

Due to the current lockdown restrictions we have had to cancel our plans to resume normal services. To make up for no 'live' service, Rev. Caroline will continue to broadcast a message each Sunday morning, at 11.00a.m, on the church Facebook page 'Lapford Congregational Church'. Communion will be celebrated on the second and fourth Sundays. All are welcome to tune in.



The Parish Church in April

2nd April - Good Friday Lay Led Reflections on the Stations of the Cross at 2.00 p.m.
4th April - Easter Sunday: 9.30 a.m. Common Worship Eucharist
11th April - Easter 2: 9.30am Lay Led Morning Prayer
18th April - Easter 3: 9.30am Lay Led Morning Prayer
25th April - Easter 4: 9.30am Common Worship Eucharist



LAPFORD COMMUNITY CHURCH

Please visit our website, www.lapfordcc.org.uk for information about the Foodbank and ARK. You will also find lots of information about Church activities and on-line services.

FRIENDS OF ST THOMAS

Wanted:
New members to help to support our historic Parish Church.

FOST was formed eleven years ago to help with the running and upkeep of our Grade 1 listed Church. FOST projects include installing under-pew heating in the nave, providing cushions for the pews and paying for the stained-glass windows to be professionally cleaned.

Historic England's listing for St Thomas lists an "exceptional interior". Lapford is very lucky to have such a beautiful and historic building, and FOST's aim is to help to keep it looking as loved and as well-kept as possible.

If you would like to help, please contact FOST secretary, Prue Lambert, on 83150 or by e-mail at: pruelambert@yahoo.co.uk

EXCITING NEWS

LAPFORD VICTORY HALL IS REOPENING SOON

Subject to government guidelines we are hoping to reopen from the 17th May.
Coffee mornings, Children's parties,
Jumble sales, Quizzes.

Are you a regular user?
Please get in touch to reconfirm.

If you have an event you wish to hold please contact Joanne, our booking secretary, on 07803 002910.

We are so looking forward to welcoming you back.

MESSAGE FROM THE EDITOR



Its great to see that children are back to school and enjoying being able to spend time with their friends. I am sure that many parents are enjoying a break from home schooling, you all deserve a big pat on the back.

Let's hope that this is the start of returning to some form of normality. Hopefully it will not seem too long before clubs can restart and people can enjoy some of the freedoms we may have previously taken for granted.

Can anyone add any more names to the faces in the photograph on page 5? If so, please get in touch.

If you are the kind person who is posting a copy of the Lapford Lookout to Noel and Beryl Parry, please contact me.

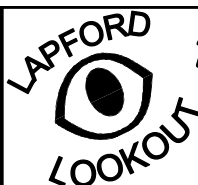
Becky Fletcher

NEW VICAR FOR LAPFORD

The Rev'd Robert Gordon, who is currently Rector of Tiverton St Peter and Chevithorne with Cove and Priest in Charge of Tiverton Saint Andrew in this Diocese, is to be our new Incumbent



His licensing by the Bishop of Crediton will take place at a venue to be advised on Wednesday, 14th July.



DATES TO LOOKOUT FOR April 2021

13th Lapford Parish Council Meeting at 7.30pm via Zoom
14th Copy deadline for May Lapford Lookout

TO CONTACT THE EDITOR

Write to:

Mrs. Becky Fletcher, 36 Orchard Way, Lapford, Crediton, EX17 6PR

Tel: (01363) 884211 or 07791 989142

E-mail: lapfordlookout@gmail.com

By hand: Use the box in The Orchard Centre or the Editor's letterbox

Deadline for inclusion in the next issue:

6 pm on the 14th April for inclusion in May issue

Contributions are welcome, to be used at the Editor's discretion.

Flyers and Inserts must be approved by the Editor prior to publication and shall only be included at the discretion of the Editor and editorial policy.

The views in this newsletter do not necessarily represent the views of the editorial team.

© All information in this newsletter is copyright and may not be reproduced without the permission of the Editor.



Lapford Weather Review

LAPFORD WEATHER FEBRUARY 2021

Milder than average despite a cold snap. Near average rainfall.

The mildest day was the 24th with a maximum of 13.8°C and the coolest was the 9th with a maximum of just -0.1°C, the coldest day for nearly 3 years. The coldest night was on the 11th with a minimum of -3.4°C. The temperature at ground level fell to -6.0°C this same night.

Total rainfall was 76.4mm, fractionally above the long term average. The wettest day was the 21st with a fall of 12.7mm.

The windiest day was the 12th with a gust of 56 m.p.h.

Andy Epstein



Be careful when reading health books.
You may die of a misprint!



Lapford Voluntary Car Aid 2011

NEED TRANSPORT TO YOUR MEDICAL APPOINTMENT?

Lapford Voluntary Car Aid provides the residents of the village (including friends and family staying with you) with courteous, reliable, fully insured drivers to get you to your appointment safely and on time. Bookings can be made by telephoning Grace Hill on 83178. Current fares for the services covered are as follows:

- Bow Medical Centre - £5
- Chiddenbrook Health Centre - £5
- Chulmleigh Dental Practice - £5
- Chulmleigh Health Centre - £5
- Crediton (Breast Screening) - £6
- Crediton (Covid jab) - £6
- Crediton Community Hospital - £5
- Morchard Bishop Surgery - £3
- New Valley Health Centre - £6
- Winkleigh Surgery - £5

We have LVCA drivers available to take anyone to have their Covid vaccination. Please contact Grace as above.



LAPFORD LOOKOUT

Contributions
welcome



lapfordlookout@gmail.com

Deadline for inclusion in the next issue:
6 pm on the 14th April for inclusion in May issue

LAPFORD YOUTH AND PLAYING FIELD TRUST NEWS

We are very grateful to those kind people who have responded to our plea for help in last month's Lapford Lookout – thank you so much! We are still a way off our target, so if you would like to make a donation (any amount is greatly appreciated), you can do so via:

- Credit or debit card donations online via PayPal account, use the email address lapfordplayingfield@gmail.com (please use the friends and family option so there are no fees charged).
- Cheque (payable to the Lapford Playing Field Trust), post it through the letterbox at Ebenezer Cottage (located behind the Ark) in Lapford or at the Ark (when lockdown restrictions ease).
- Cash: collection box inside the Ark (when lockdown restrictions allow).

We would also like to express our gratitude to the Parish Council who have kindly agreed to cover the cost of the insurance as they have done in previous years – thank you.

In order to improve the facilities and make sure we have a wide appeal to everyone in the community, we are very keen to hear your views on the Playing Field (located at the end of Church View, not to be confused with new area, Lower Town Place on the main road).



- Do you use the playing field? If not, why not?
- Is there something that you would like to have on the field that would encourage you to use it more?

Please email your comments to lapfordplayingfield@gmail.com or comment on the Facebook page: <https://www.facebook.com/LapfordPlayingField>

Enjoy springtime in the playing field!

The LYPFT Committee

KIDS ARE QUICK

Teacher: Maria, go to the map and find North America.
Maria: Here it is.
Teacher: Correct. Now Class, who discovered America?
Class: Maria?
Teacher: John, why are you doing your maths multiplication on the floor?
John: You told me to do it without using tables!

USED POSTAGE STAMPS



Please save your used stamps for The British Hedgehog Preservation Trust Collection point at The Ark

NO YELLOW BRICK ROAD, JUST A PATHWAY TO THE FUTURE?

In the March edition of the Lapford Lookout the H4L Strategy Group published its Roadmap for 2021 to 2023, outlining how we intend to tackle the future enhancement of central village facilities. As we explained, the implementation of this Roadmap and the timescales indicated depends to an extent on the lifting of current COVID 19 restrictions and an anticipation that over the next few months we will gradually be able to return to some form of normality in our lives. The Roadmap was developed to share evolving ideas with parishioners and to demonstrate that any future changes will only be considered after extensive consultation and with the majority support of parishioners.

We need to correct one thing. In error the wrong email address for H4L was included. This should have been heart4lapford@aol.com. Our apologies for this. Please amend your copy of the Roadmap with the correct email address.

Of course it is one thing to publish a Roadmap outlining how we intend to move forward, but an entirely different matter to turn this into tangible outcomes. So over the next few months we will try to bring you regular updates on progress made, and of any modifications to the Roadmap which emerge from wider discussion or public input.

Recent weeks have brought spring weather with further progress being made on Lower Town Place. Storage containers have been brought on site, and will be visually improved by cladding/screening, the fence between Lower Town Place and the car park has been replaced and hedging plants have been installed. Apple tree rootstock has been sourced ready for grafting to allow cordon dwarf apple trees to be planted along the roadside boundary fence.

Returning to the Roadmap, good progress is being made by a steering group working on behalf of the Victory Hall and HOLD and you will have seen the call for people to join an Events Group to get things moving on Lower Town Place this summer and beyond. Events don't just happen, they don't magically appear, but they have the capacity to bring people together to celebrate and enjoy our village. That is if there is a willingness to pitch in and play a part. It could be a great summer, but equally it could only be a pipe dream without YOU!

The Youth Club Management Committee have been active and we can be sure to see some ideas being shared in coming months about possible activities and future options for providing facilities for teenagers and the other associated objectives under Aim 2 of the Roadmap.

Conducting a village wide survey (Aim 3) is a major undertaking and requires the formation of a broad task group to identify what we need to find out, and how we will do this. This will include formulating questions, designing a structured survey, encouraging participation and evaluating responses. Further discussion is needed on this aim but we intend to call for people to join a survey group within the next few months. So think about it. Could you bring any expertise, common sense or enthusiasm to such a group?

There are differences of opinion about whether it is "chicken or egg". Do we ask for ideas first or do we put some propositions out for people to vote on? There is no right way to approach this. Some people want to be consulted before any conceptual ideas are developed. Others would like to see what the options and possibilities are before indicating their preferences. However we get there the intention is to see whether we can develop visual concepts for Aim 4, probably over an extended 2/3 year time scale.

Individual organisations in the village have their own objectives, sometimes in conjunction with their neighbours. They will keep everyone informed about progress through separate articles or summaries under the H4L banner.

As has been recognised in letters to the Lapford Lookout it has taken committed people who have dedicated considerable time, physical effort, enthusiasm and financial commitment to bring this idea to the point where it can properly develop and thrive with the involvement of the community. This issue of the Lapford Lookout brings more detailed news of progress made and work in hand to enhance facilities in the village. Hopefully as restrictions ease and gatherings are allowed the heart of Lapford will start to beat again.

But one last note of caution. As the saying goes "Rome wasn't built in a day". Anyone reflecting will recognise how different the central village landscape is now compared to twelve months ago. But there are still things to do to ensure that the right facilities are available this year. Some comments have already been heard about incongruous storage containers. Please be patient, this isn't the finished article, but another big step along the "Devon Red" stony road.

Ron Harle, Chair, H4L Strategy Group



LAPFORD PRIMARY SCHOOL - 1939?

Headmaster: Mr Widgey. Three ladies in back row: Gwen Bourne, Marjorie Case, Florence Hodge. In front of Gwen, Dorothy Gunn (my eldest sister). She stayed on an extra year after she was fourteen and helped with the infants. She used to take younger brother, John, to school from Eastington where we lived on the farm and where I was born. On his first day, Dorothy saw, from the window, John running out the drive on his way home. George did the same thing on his first day at school!

Ann Cann



Photo courtesy of Ann Cann

MESSY CHURCH BAGS

In the most recent months of the pandemic, Lapford Congregational Church has been finding new ways to do Messy Church. Being unable to come together for craft, worship and food has been very disappointing for all those concerned. We have been committed to trying to keep in touch with our families and spread the word of the Lord via Messy Church bags which contain all you need to make several crafts each month as well as a recipe and food to make either a delicious meal or sweet treat!

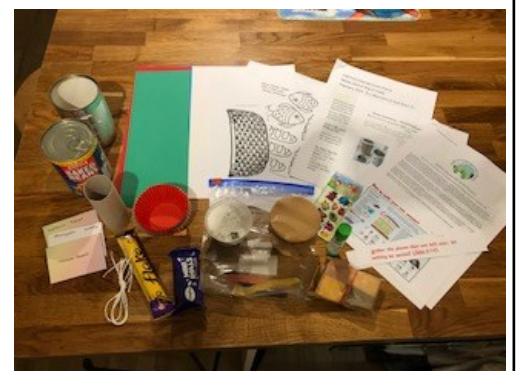


The last few months we have been focusing on the theme "Eco Warriors of God!" It has been getting the children to think about how we look after God's planet, take care of wildlife and reduce the amount of waste we make by being creative. The activities have included planting, bug hotels, bird feeders and even chocolate bug gardens!

We have nearly twenty families that participate in the bags every month and the Church would like to thank all of them for embracing the different way we are providing Messy Church.

If you have recently moved into the village or haven't heard about our Messy Church before but would like to find out more, please email our Youth and Family Worker Cathryn Seymour at cathrynseymour@outlook.co.uk.

As lockdown measures begin to ease, we will be looking forward to the time when we can reopen Messy Church again. We will be in touch with all our families to keep them informed of our decisions.



Lapford Congregational Church would also like to take this opportunity to wish Lapford community a Happy Easter.

LOCKDOWN STORY

I have the pleasure of looking after my two grandchildren two days a week, more if my daughter is on call.

When we originally went into lockdown it was very hard not seeing them, so every night after tea, I would FaceTime and tell them a pre-bedtime story. After my limited supply of story books ran out, I would make up stories to tell them.

I decided to write these stories down and added some fun poems too. All seemed to go down well with them and also with friends' children too, so much so that my cousin, an artist based in Holland, has been producing illustrations to accompany the stories and we are tentatively looking into the possibilities of having a children's book published aimed at three to seven year olds.

Well, everyone has to start somewhere!

K. T.



ORANGE AND LEMON CURD

Good to use on scones with cream, or mixed with yogurt for a quick, and refreshing pudding.



www.sustainablecrediton.org.uk

1 lemon and 1 orange
2oz (50g) butter
3 eggs
4oz (100g) caster sugar
4oz (100g) sugar cubes.

Wash and dry the lemon and orange, and rub the sugar cubes over the rind to extract the flavour. Squeeze the juice from the orange and lemon. Put the sugar, butter, fruit juice into a basin and add the beaten eggs poured through a strainer. Place the basin over a saucepan of gently boiling water and stir until the sugar has dissolved and the mixture has thickened. Pour into an airtight storage jar. Once opened store in the fridge – if it lasts that long!

WILD LAPFORD - HEDGEHOG HIGHWAYS



Hedgehogs have already emerged from hibernation and are busy foraging for food to replenish the weight they have lost during the winter. In one night alone, a hedgehog will travel over a mile on its' hunt for food and at this time of year, also to find a mate.

They prefer to travel through the cover of densely planted borders, overgrown areas and hedges for protection from potential predators. However, in relatively built-up areas like the centre of the village, they also need access to different territories (parks and gardens) to get enough food. The national "Hedgehog Highways" project (see www.hedgehogstreet.org) is encouraging everyone to talk to their neighbours and create holes or gaps in our adjoining walls and fences. A hole 13cm x 13cm (5" x 5") will enable the hedgehogs to pass through allowing direct access to neighbouring gardens without the need for dicing with death due to the traffic on the roads.

I'd love everyone in the village who is able to participate in this hedgehog highways project and put Lapford on the map as a hedgehog sanctuary. The Playing Field Committee has already pledged to leave "scruffy" areas behind the wire fence for hogs to nest and have cut holes in the fence to allow the hogs easy access. The Lower Town Place "gardening group" led by Andy Epstein is in the process of replanting hedges around the borders of the area, this will enable the hogs to move around under cover and hopefully increase the chance of the hibernaculum being used next autumn. The Archdeacon has committed to preserving biodiversity in the St Thomas of Canterbury churchyard by not permitting the removal of the compost heap, hedge and trees until an environmental impact assessment is carried out. These efforts help not just hedgehogs, but are beneficial to all wildlife.

So, what can you do to help?

Even if you don't want to actively encourage hedgehogs to your garden by leaving food out and providing nest boxes as I do, you can still help. Simply make sure your garden is "hedgehog safe". By this I mean, don't use slug pellets as it will kill the hedgehogs that ingest the poisoned slug; avoid using netting in places where there is a risk of a hog getting tangled up in it; if you have a pond, swimming or paddling pool with steep sides, make sure there is a ramp to aid a hog to escape if it falls in. In addition to this, make your garden accessible by creating hedgehog holes with as many neighbouring properties as possible, allowing the hogs safe passage to other gardens.

If you need any help there is lots of information on the hedgehogstreet.org website for both individuals' gardens and landowners. Information is also posted on the Wild Lapford Facebook group. I am very happy to offer advice if you need it.

It would be wonderful if we could create a map of the village showing where all the hedgehog highways are located as well as those that provide feeding stations and nest boxes. Please get in touch if you are prepared to help with this project (email helengreensmith@hotmail.com, phone 07733 227732 or via Facebook messenger).

Thanks to Rebecca Holley for her lovely artwork.

Helen Greensmith



**Sitting quietly, doing nothing,
Spring comes, and the grass grows by itself.**
Zenrin Kushu

THOUGHTS FROM THE ARK



By the time the April Lapford Lookout drops through your letter box, Mothering Sunday and 'Cream teas in boxes' will be a distant memory. The response was really amazing. Thank you for everyone who has supported the boxes. The churches will have celebrated Palm Sunday, perhaps by on-line services, and Easter weekend will be upon us.

Most of us by now will have had our first vaccination and be waiting for the second dose. The urge to be going out and doing things is so tempting. I don't think we are very good at waiting, but wait we must and take things slowly rather than have another lockdown.

There is no such thing as instant success with either people or problems or viruses. Whether you need to lose ten pounds or a hundred pounds in weight, it can only shed one pound at a time. Standing on top of a mountain is a thrill, but you can only get up there one step at a time. Nothing great is created suddenly, almost every significant success in life comes at the end of a long arduous wait. And unless you accept that truth you'll give up far too soon and settle far short of the success God has in mind for you.

The American company Jell-O celebrated its one hundredth anniversary in 1997, but if its inventor were still alive, he would probably take little comfort in his product's success. In 1897, Pearl Wait wore many hats. He was a construction worker who also experimented with in patent medicines, and he went door to door selling his therapies.

In the midst of tinkering and experimenting, he hit on the idea of mixing fruit flavouring with granulated gelatin. His wife promptly named it Jell-O and Wait had one more product to peddle. Unfortunately, the initial sales of his jiggly snack were not as strong as he'd hoped, so he ended up selling his Jell-O rights to Orator Woodward for the paltry sum of \$450. Woodward was a savvy business man. He knew the value of marketing, and within eight years, he turned a \$450 investment into a million-dollar business. Today, not a single relative of Pearl Wait receives one penny from one million-plus boxes of Jell-O sold every day.

Why not? Because Wait couldn't wait.

Taken from March UCB notes.

Hopefully the long wait for the ARK to be open will be at an end and we can look forward to welcoming you all back for coffee, tea, cake etc. It can't come soon enough! But we too must wait until it is safe to go out again and meet with people.

May you and your family be blessed over the Easter weekend, keeping everyone safe and well.

The Ladies at The ARK

CHULMLEIGH FLORAL ART CLUB

It is with regret that we must inform Members and Friends of Chulmleigh Floral Art Club that the club is now closed with immediate effect. Our Chairman Jackie is unable to continue in post because of ill health and it has not been possible to form a new Committee.

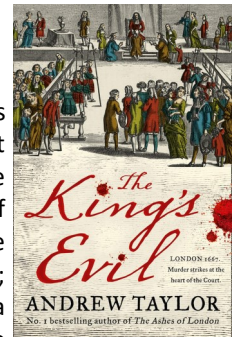
However when circumstances allow we are hoping to have a final farewell meal or an outing in the Summer for current members probably after June 21st 2021.

After that any remaining money in the Club's funds will go to charity, possibly the Devon Air Ambulance. If members would like to suggest another charity please contact Jackie.

Over the years we have had many successful and informative meetings with excellent Demonstrators and have together enjoyed the friendship of a welcoming Club. There are many happy times to remember.

Joan Rowland
01769 581241

LAPFORD BOOK CLUB BOOK REVIEW - THE KING'S EVIL

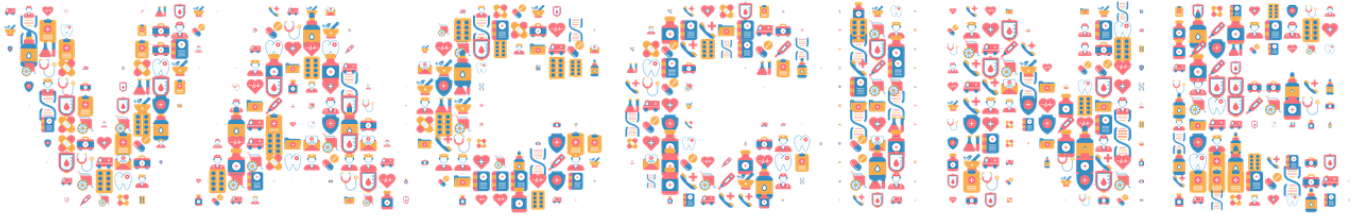


Our book this month was "The King's Evil" by Andrew Taylor, set for the most part in London in 1667, the year after the Great Fire. The title refers to the belief that the King had divine powers to cure many diseases by the laying on of hands; the book specifically refers to scrofula which was a form of tuberculosis in the lymph nodes of the neck, resulting in painful and unsightly growths. Charles II is thought to have performed this ceremony on more than 90,000 victims; it is not recorded how successful this treatment was (!) but it is possible that, since a gold or silver coin was given to each applicant, the sale of these "angel" tokens may have provided the money for decent food for a while.

The story is essentially a "whodunit" which starts with the murder of Edward Alderly, who turns out to have been a thoroughly unpleasant character, so there are plenty of suspects. The King determines that the case be hushed up as the body was found on the premises of an important courtier, but there is another sub-plot about an illegitimate daughter, possibly royal, who needs to be kept out of sight. We follow one man's efforts to find out the truth. The book is well written and sets out what life in a partially burnt-out city must have been like (although, as Jill pointed out, a map of the city at the time would have been helpful); while those with money were building grand houses of stone and marble, many others were camping out in the ruins of houses that had gone up in flames. The plotting at Court – who was in and out of favour – the hardships involved in travelling any distance, the harsh punishments and ease with which a person could be thrown in prison, all come to life. In the end, there is a man who takes the blame for the murder (and loses his head), but was the original suspect really guilty?

I thoroughly enjoyed the book and will look out for others written by Andrew Taylor.

Suzy Mann



VACCINATION HOPE – A MESSAGE FROM THE RECTORY AT NORTH TAWTON

As I write, the vaccination roll-out is moving ahead at a remarkable pace. It comes tragically too late for so many people, but the latest Government figures show that over 25 million have now been vaccinated in the UK. I think even a quarter of that would be a great achievement. At the pace the various doctors in my family have been jabbing people since late December, I can believe we might just reach the next target. “Vaccination is the way out of this crisis,” “Vaccination offers hope and a return to normality,” we have been told. No doubt there will be further bumps in the road, and the media will depress us all by highlighting them, but I am beginning to believe that the end of the virus stage of this crisis might be in sight. Only then, I suppose, can the economic fight-back truly start. As for the social, mental and spiritual damage Covid has wreaked, the recovery required there will need a lot more than a mere jab in the arm. But let’s stay positive. Vaccination offers hope, as it has since 1796. I’ve been doing a bit of research into the history of vaccination... lockdown boredom perhaps!



In 1796 in Gloucestershire, local doctor and scientist Edward Jenner investigated an old wives tale: milkmaids never die of smallpox. Convinced there was a scientific reason and not some hocus pocus, he worked out that milkmaids were often carriers of cowpox, a comparatively harmless virus contracted from touching cow udders. Previous attempts by physicians to inoculate people against smallpox had achieved poor results and many deaths. But by exposing people to cowpox first, Jenner established that immunity to smallpox was created. So “vaccination” was invented; the Latin “vaccinus” meaning “from the cow.” And there is a link to North Tawton.

Edward Jenner is considered the “father of immunology” and his work is said to have “saved more lives than the work of any other human.” I wonder what he would have made of such a eulogy. In fact, we needn’t wonder, because shortly before his death in 1823 he said, “I am not surprised that men are not thankful to me.” (Well, Edward, we are thankful to you, especially in 2021!) “But I wonder that they are not grateful to God for the good which he has made me the instrument of conveying to my fellow-creatures.” Amen Dr. Jenner! With every jab, we should thank our Creator, for he is God of science and medicine as well as faith. So what is the link to North Tawton then? It’s a little tenuous, but worth noting.

In the same year Jenner made his discoveries in Gloucestershire, a young Samuel Budd was starting out as a doctor in North Tawton. The family home was Melhuishes in the Square, which presumably also doubled as his surgery. Here, Budd practiced medicine all his life until his death, aged 69 in 1841. Samuel and Catherine Budd had ten children, six of whom entered the medical profession. Their story is told in the Book of North Tawton, and the family memorial stone is still visible in the North Tawton churchyard today. (It is south east of the church building at the chancel end, tall and with a Celtic cross on top.) One son, Christian Budd, would continue the family practice for another 40 years after his father’s death. But another, William Budd, would play a crucial role in the early study of infectious diseases pioneered by the likes of Jenner. William caught typhoid whilst studying in Paris. He returned home to North Tawton to recover, and in 1839 he documented a typhoid outbreak in mid Devon, showing that the disease passed from person to person by infected drinking water. Whilst working in hospitals in Bristol, he learnt how to reduce infection and mortality from diseases like typhoid, TB and cholera. His work influenced Florence Nightingale and her reform of nursing practices. William Budd’s legacy is not as great as Jenner’s or Nightingale’s, but extraordinary and inspiring nevertheless.

Samuel Budd administered smallpox vaccinations in North Tawton, and lived just long enough to see the first Vaccination Act of 1840, which provided vaccination for all free of charge. By 1980 the world was free of smallpox. So as a child of the late 1970’s, I didn’t receive a smallpox vaccination. It was deemed unnecessary in the UK by then. But like most of you, I did receive a plethora of other jabs, each of which I consider a great blessing from God... polio, tetanus, measles, rubella, whooping cough and BCG. Most of these are now given as combined jabs. My children have had them. Just a little pinprick, and we get on with our lives. But what a privilege to be free from these diseases, a privilege that now extends to coronavirus in the greatest vaccination programme ever attempted.

So over this year, as we all roll up our sleeves for a jab, I hope we will also do as Edward Jenner suggests: thank God for his goodness in saving us, physically. It’s an echo of the spiritual salvation offered by the one who, beyond even Jenner, has saved more lives than any other human. I hope we will also consider what we are being saved for as well, as we exit Corona. As we each roll up our sleeves for a jab this year, perhaps ask yourself in what other ways you could roll up your sleeves to aid the recovery.

Rev’d Nick Weldon

Vicar of St. Peter’s Church, North Tawton

(First published in the Roundabout February 2021. Edited and reproduced by kind permission)

HELLO FROM THE ADVENTURE GROUP OF GAMERS

It's some time ago that AGOG the Adventure Group of Gamers was born and no sooner had it started to gain traction we found ourselves in our current socially restrictive lifestyle.

So what is adventure gaming? Well in part it is a board game club, but not for board games as you might know them. The new generation of board games are as diverse as they can be; there are board games about acquiring pirate gold, horse racing, woodland animals, building railways and, dare I say it, pandemics to mention but a few. Many board games are competitive, but some encourage teamwork and player co-operation to beat the game. The beauty of a board gaming club is that you can try games out without having to buy them and a great bonus is that you have someone else to explain the, sometimes complex, rules. It's a great way to spend a sociable evening.

We have found that a number of (board) games can be played on line via something like Zoom. This is a particularly fun way to meet up with family at a time when conversation might be a little repetitive; here is one you might want to try out.

Codenames

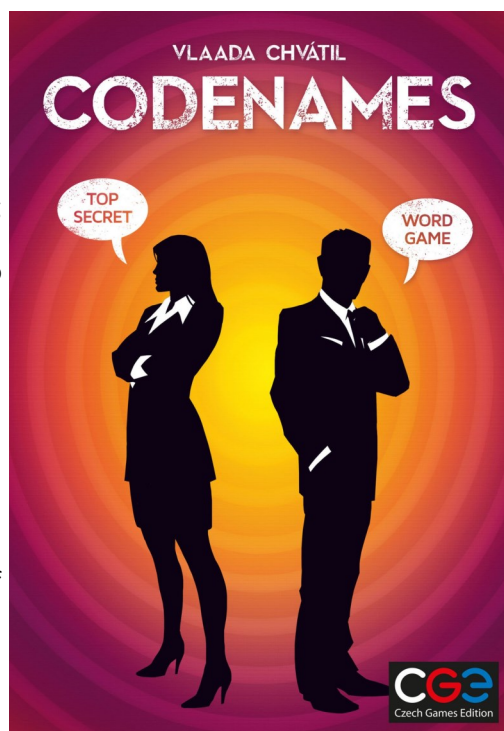
In this game, which is ideal for a minimum of four players, you are secret agents trying to describe the secret identify of fellow agents in just one word. The game is played with 25 word cards that are placed on a table in a grid. Each team then has a key card that tells them which of the 25 cards their team has to guess to win.

Teams then take it in turns to describe as many of their agents as they can using just one connecting word. So for example, if the words Rabbit, Bermuda, Brush, Shape, Stadium and Corners are on the table, you might say 'Triangle, 3' to indicate there are three words on the table that are associated with the word Triangle. Your fellow secret agent (Team mate) must now try and guess which three words these are from that one clue. In this example the three would be: **Bermuda** Triangle, the **Shape** Triangle and the **Corners** in a Triangle. There are 25 words in the grid and it is the first team to unlock all of their Codenames that will win.

This is a great game to play over Zoom as you can take a photograph of the words with your phone and then share this over Zoom so all players can see the same board. Zoom also has an option to draw on the photograph so you can mark off the cards when they have been guessed.

Codenames is available online or from good games shops.

Warren Clayburn



LAPFORD PARISH COUNCIL NOTES MARCH 2021

Please note this is a summary of the main points of interest. A copy of the draft minutes will be made available on the Lapford village website, and on the notice boards in the Orchard Centre and the Ark.

The Council met on Tuesday 16th March 2021 via Zoom.

Five members of the public attended.

- Cllr Squires, DCC, advised that the Devon Recycling Centres would be keeping Summertime hours early this year due to increased demand. Opening hours would be from 9-00am to 5-00pm on weekdays and 10-00a.m to 6-00pm at weekends.
- Cllr Eginton, MDDC, reported that the MDDC budget for the next financial year would increase by 2.39%. For Lapford this would mean £53.59 for a band D property. The MDDC cabinet had been reduced by one member.
- The Church Green Trustees looked forward to refurbishment work on the bank between the Green and Lower Town Place beginning soon. Work to repair the Telephone kiosk would be carried out on a voluntary basis and the kiosk made ready to work as a village exchange point. This would leave the Melissa Lake Shelter free for use as a seating area.
- Two volunteers had come forward for the DCC Road Warden scheme following last month's appeal from the Lapford Emergency Action Plan Committee.
- It was hoped to arrange a Zoom meeting between Parish Council representatives, County Councillor Margaret Squires and Steve Tucker, area Highways' officer, to discuss various outstanding local Highways issues.
- The issue of extending the 30mph limit at the top of the village is being progressed at County level.
- The date for the next meeting was set for Tuesday 13th April at 7-30pm via Zoom

SIGNS TO MAKE YOU SMILE



- On a septic tank truck:
"Yesterday's Meals on Wheels".
- On a Church notice board:
"Seven days without God makes one weak".
- On a Maternity Room door:
"Push, Push, Push".

On a Taxidermist's window:
"We really know our stuff".

Outside a Car Exhaust Shop:
"No appointment necessary—we hear you coming".

In a Vet's waiting room:
"Be back in five minutes. Sit! Stay!"

In the car park of a Funeral Home:
"Drive carefully. We'll wait".



TODAY WAS A DIFFICULT DAY

"Today was a Difficult Day," said Pooh.

There was a pause.

"Do you want to talk about it?" asked Piglet.

"No," said Pooh after a bit. "No, I don't think I do."

"That's okay," said Piglet, and he came and sat beside his friend.

"What are you doing?" asked Pooh.

"Nothing, really," said Piglet. "Only, I know what Difficult Days are like. I quite often don't feel like talking about it on my Difficult Days either."

"But goodness," continued Piglet, "Difficult Days are so much easier when you know you've got someone there for you. And I'll always be here for you, Pooh."

And as Pooh sat there, working through in his head his Difficult Day, while the solid, reliable Piglet sat next to him quietly, swinging his little legs...he thought that his best friend had never been more right."



A.A. Milne



The Plant Shed & Farm Shop

**OPENING AT EGGESFORD STATION
2ND APRIL!**

The best quality local produce

A full range of fruit, veg, meat, dairy, fish and store-cupboard essentials...

LOGS – SACKS OF POTATOES – COMPOST

We are very excited to now offer locally-reared lamb, pork and beef.

Open:

Tuesday – Friday 10am-6pm

Saturdays 10am-4.30pm

NOW DELIVERING!

Pre-ordered collections and veg boxes also available

**Please call 01363 720073
or email hello@theplantshed.co.uk**

Mike@burgeplumbing.co.uk



07876193267

BURGE
Plumbing & Maintenance

Your Local Friendly Plumber

- Kitchen and bathroom installations
- Unvented cylinder specialist
- General plumbing
- Tiling
- Free estimates



Paul the Painter

Interior Painter

Top quality service with a high end finish.

Paul Adams
07799 270559

smugglerssigns@outlook.com



The Devonshire Dumpling

We are offering takeaways from Wednesday to Saturday nights and for Sunday lunch. Please see the menu on Facebook or our website, www.devonshire-dumpling.com

We are covid compliant and maintaining safe social distancing.

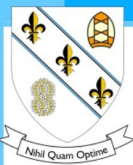
Contact Laura on 01363 85102 or email thedevonshiredumpling@gmail.com



TUX



Quality Work By Fully Qualified Tradesman
 All Electrical Work Undertaken
 Domestic, Industrial, Commercial
 & Agricultural Installations
 Fully Compliant to Part P Building Regulations
 All Work carried out to
 18th Edition Wiring Regulations
 Over 30 Years Experience in electrical contracting
 24 HOUR EMERGENCY CALL OUT
 Tel. 01363 881002 Mob. 07710 673270
www.tuxelectrical.co.uk



Chulmleigh College

We can help YOUR child to achieve 'Nothing But Their Best'.

Every day is an Open Day, please contact us to arrange a personal tour.



www.chulmleigh.devon.sch.uk 01769 580215

admin@chulmleigh.devon.sch.uk

@ChulmleighCollege

@ChulmleighAT

gs gilbertstephens LLP
SOLICITORS

When you need advice, we have the solutions

Call our Okehampton office on **01837 51 21 00**
Rosemary House, Market Street, EX20 1HN

Call our Crediton office on **01363 77 55 66**
Manor Office, North Street, EX17 2BR

Call our Exeter office on **01392 42 42 42**
15-17 Southernhay East, Exeter, EX1 1QE

Visit us online for more information
gilbertstephens.co.uk

Gilbert Stephens LLP is authorised and regulated by the Solicitors Regulation Authority (no: 536070).

THE BIG SWEEP

YOUR LOCAL REGISTERED CHIMNEY SWEEP



FOR A CLEAN AND
EFFICIENT SERVICE
PLEASE CONTACT RICHARD

MOB: 07810 116798

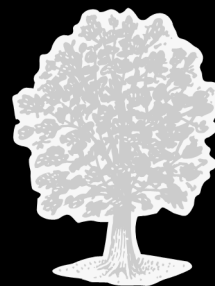
EMAIL:
richard@thebigsweep
northdevon.co.uk



JOSH NOON TREE SERVICES

Tree surgery and
low impact forestry
Quality seasoned logs
and kindling for sale

☎ 01363 83908
07792 906258



NICK TUCKER

Qualified Carpenter & General Builder
Working in the village for 25 years

EXTENSIONS, LOFT CONVERSIONS,
KITCHENS & BATHROOMS,
DOUBLE GLAZING & CONSERVATORIES,
DECORATION & GENERAL MAINTENANCE

Prospect House, Lapford
Tel: (01363) 83601

ARCHITECTURAL SERVICES

RICHARD ARCHER Est 1987



PLANNING DRAWINGS for
EXTENSIONS CONVERSIONS NEW BUILDS
PLANNING & BUILDING REGULATION APPLICATIONS

Copplestone
Devon

SIMON ARCHER M: 07966 347 957
E: simon@architectural-services.org

Visit the website: architectural-services.org

DESIGN DRAWINGS SURVEYS ADVICE



EGGESFORD CROSSING CAFÉ

A Dog Friendly Café
situated in Eggesford Station Yard

We are now OPEN!

Offering breakfasts, coffee and cake.

With the current social distancing regulations we have five tables available inside the premises and five outside, weather permitting. We will be operating table service to prevent the need for queuing. Due to the small number of customers possible at any one time and to keep our business viable we are asking you to be considerate in these difficult times.



**We look forward to
seeing you soon!**



Look out for further information regarding extended opening hours. For further details and bookings contact

Ashley or Harriet:-

Tel: 07772 254005 / 07940 157555

Email: harrietcresswell@yahoo.com

Or Message on Facebook:

Eggesford Crossing Café

Painful Feet?

Viv Pulford Foot Health Practitioner

Diploma in Foot Health,
and BSc in Adult Nursing.
Tel No 01884 861306 or
07827 779559

Nail Cutting and filing
Corn Callus Removal
Deal with Fungal Infections / Thickened Nails
Discounts for two or more people in same house

For treatment in the comfort
of your own home

MARTIN DOWN - 07812 513383

GARDEN MACHINERY/ATV
SERVICE & REPAIR

NEW STIHL/VIKING MACHINES TO ORDER



SECOND-HAND MACHINES

COLLECTION AND
DELIVERY
SERVICE AVAILABLE

S.L. PASSMORE PLASTERER

ALL TYPES OF INDOOR PLASTERING
PLASTERBOARDING
AND DAMP-PROOFING



23 YEARS EXPERIENCE

FREE ESTIMATES

Call Steve on 07584 284256

Email: slpassmore23@gmail.com

DARREN
CHAPMAN
ELECTRICIAN

NEED AN ELECTRICIAN

- Rewires
- New Builds
- Alterations
- P.A.T. Testing
- New Consumer Units
- TV/BT Sockets

dpclectricals@hotmail.co.uk

MOB: 07825 630643 TEL: 01363 85625



ART

APPLIED RADIO TECHNOLOGY

- 4G Wireless Broadband up to 40Mbps (100GB data) £35 /m
£200 initial installation
 - 2 Way Radio Event Hire
 - PC and IT Installations, diagnostics and advice
 - Repair of all types of electronic & radio equipment
 - Automotive Electrics

Offering a broad range of technical services to the local community
and businesses

Call or email Simon for free no obligation advice or quotation

07480370592 or email siones@appliedradiotechnology.ltd

Stove Centre

01769 574411

German Electric Radiators Available from stock



Highly Efficient Thermostatic 24hr 7 day Programmability in every room

www.stovecentre.co.uk
Unit 2 Horsepond Meadow, South
Molton, Devon EX36 4EJ

moorland fuels
part of your landscape



Call Today:
01837 55700

In the last 12 months, we delivered
in our agreed delivery window
99.6% of the time.



Ask About:

- Heating Oil and Tractor Diesel
- Oil Tank Cleaning
- Lubricants and Additives
- Coal
- Oil Tank Replacement and Installation

www.moorlandfuels.com



Prompt, Reliable, Low-Cost Service
 No Fix - No Fee
 PC, Laptop & Apple - Repairs & Upgrades
 New & Reconditioned Computers
 Ongoing Support for Home or Business
 Networks & Servers - Broadband & VoIP Telephones



www.bytescomputers.co.uk 01363 82842
 help@bytescomputers.co.uk 07906 298739



JL Bookkeeping Services
 Bookkeeping & Payroll

Julie Lovesey MICB PM.Dip

Based in Nymet Rowland

T: 07976 904184

E: julie@jlbookkeepingservices.co.uk

W: www.jlbookkeepingservices.co.uk

ESTABLISHED 1922

C. Burrows & Son

(J.J. Burrows)

*Funeral Directors
 A Caring Family Firm
 Personal Supervision
 Any Distance Any Time*

Tel: 01363 83258 Mobile: 07803 142357
 Coldridge, Crediton, Devon



Jonathan Wood
 Veterinary Surgeon Ltd.
 01363 772319
 www.jwoodvet.co.uk
 24hr Emergency Service.

As an RCVS accredited practice, we provide a friendly, caring, professional service for companion animals, equine and farm patients.

We offer hydrotherapy and rehabilitation, modern ultrasound equipment, in house laboratory service and much more.

For full details visit our website.

We are proud to be accredited by the international cat care organisation as silver level cat friendly clinic.



EX17 6QT

TEL: 01363 83373

Our professional workmanship is available in all of the following disciplines

- MOT class 4 & 7 (motorhomes & transits)
- Servicing
- Diagnostics
- Air conditioning
- Car sales
- Tyres
- Exhausts
- Batteries

We offer a local vehicle collection service or courtesy cars for your convenience

ATA & Bosch Accredited Diagnostic Technicians

www.lapfordcrossgarage.co.uk



DOORSTEP MILK DELIVERY SERVICE IN LAPFORD



**Free range pasteurised
 Whole Milk
 doorstep refills**

Monday Evenings

Between 4 - 8pm

Thursday Mornings

Before 7.30am

Please call 01363 779134 or email milk@kellanddairy.co.uk for more information.



If you would like a last resting place
in beautiful countryside
overlooking Dartmoor
phone 01647 24382 and speak to
Julie or Martin Chatfield
www.crosswayswoodlandburials.co.uk



LOWERFIELD HOUSE
bed and breakfast

01363 507030
enquiries@lowerfieldhouse.co.uk
www.lowerfieldhouse.co.uk

Lapford
CREDITON
EX17 6PU

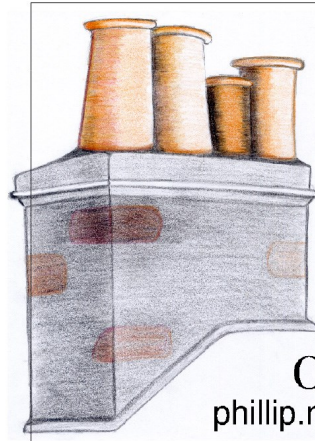


**KERRY
PLANT**
Complete Excavation

*Site Works
Driveways
Drainage
Foundations
Landscaping*

*Septic Tanks
Treatment Plants
Retaining Walls
Stone Walling
Printed Concrete*

Mobile: 07976 641606
Email: elwynkerry@hotmail.com



**Chimney
Sweep**

All work insured CRB checked
Certificate of sweeping Clean service
Discount for multiple chimneys

Phill Melville
phillmelville.com

01363 877411
phillip.melville@googlemail.com



**Your Local Family Run Residential
Sales & Lettings Agent**

**Call us for a FREE
no-obligation
Valuation of your Property**

01837 83393

**E: info@howesestates.co.uk
W: www.howesestates.co.uk**

Sell from 0% with no upfront fees**

****terms & conditions apply**



Specialists in Digital
Satellite Systems

Aerial &

- Aerial Upgrades
- All aspects of installation
- Extra TV Points
- TV Wall Mounting Service
- Existing Aerial & Satellite Problems Solved
- DAB/FM Radio Aerials
- Free Telephone Advice
- Free Quotation Services

01363 777190 **07841 644395**
kev@kevinosborneaerials.co.uk

www.kevinosborneaerials.co.uk

TUCKERS COUNTRY STORE

Your One Stop Country Shop

- Farm Pet Equine & Farm Supplies
- Open 6 days a week
- Lord's Meadow, CREDITON
- www.edwintucker.com.
- 01363 772202
- Free parking, friendly service, competitive prices

Abigail's Beauty Retreat

Beauty ♥ Massage ♥ Holistic

07565 768386

I'm Abi a fully qualified beauty therapist. I offer a wide range of treatments with a friendly professional service. I enjoy all aspects of my job, as everyday holds something new. I look forward to welcoming you to my Salon.

abigailbeautyretreat@gmail.com

Lapford, EX17 6PZ

Ashridge Court
Farm, North
Tawton, EX20 2DH



07872 598 659
info@ashridge-
court.co.uk

Grass Fed Beef Boxes

£60 for 6kg
£120 for 12.5kg

£25 for 3kg Stew Packs
Joints and Steaks also Available

Delivery Available

Mike Leach

- Grass & Hedgecutting
- Fencing • Landscaping
- Gardening • Paths & Patios
- Pressure Washing
- Now cutting lawns & paddocks up to 4 acres



Tel: 01363 83656 (Ans Available) Mob: 07875 026139
33 Highfield, Lapford, CREDITON, Devon, EX17 6PY



EDWORTHY COMPUTING LTD

Unit 1, Oakfield, Bow, CREDITON



Computer & Laptop repairs & virus removal

New & Used computer & laptop stockists

IT support & Website design



Remote Support

Printers & Consumables

Prompt & Reliable Call-out service

t: 01363 881157

e: sales@edworthycomputing.co.uk

www.edworthycomputing.co.uk



YOUR LOCAL LEGAL EXPERTS

- Moving Home
- Family Law
- Wills & Probate
- Lasting Powers of Attorney
- Agricultural
- Landlord & Tenant
- Accountancy & Tax Planning
- Commercial Property & Leases



QualitySolicitors
Charlesworth Nicholl

Changing the way you see lawyers.

01363 774706 mail@charlesworthnicholl.co.uk


www.qualitysolicitors.com/charlesworthnicholl

31 High Street, CREDITON, Devon, EX17 3AJ

CMP

ELECTRICAL SERVICES

TESTING AND INSPECTING
WIRING ALTERATIONS
REWIRES
RENOVATIONS
NEW BUILDS
FAULT FINDING
DOMESTIC
RESIDENTIAL
COMMERCIAL
AGRICULTURAL



ABLE TO UNDERTAKE AND CERTIFY ALL ASPECTS OF ELECTRICAL WORKS

CONTACT 07702 430023
CMPELECTRICAL@HOTMAIL.COM

F. J. STEVENS & SON

Monumental Masons



Memorials in Granite - Marble - Slate & Stone
New Memorials - Renovations - Additional Inscriptions
Home visits - Free estimates & brochure on request

For a caring personal service call our family run business which covers all of Devon

Crediton 01363 776321
Mobile 07850128413
Email stevenscrediton@yahoo.co.uk



Workshop: Albert Road, Crediton, EX17 2BX

Overworked or Stressed? Achey muscles?
Tense shoulders? Stiff back?

Massage Therapy in Lapford.

Penny King
VTCT level 3 diplomas in Holistic Therapies,
Aromatherapy, Sports Massage

Please feel free to contact me to find out more,
discuss your needs or book an appointment.

FB page
'Penny King Complementary Therapist MFHT'
Tel 01363 83091
Mob 07851 726791



Blackberry Lane

Half a mile out of Lapford on the Chawleigh road, selling fresh and tasty fruit and vegetables - **all home-grown**

Come and see, phone, email, check out our website or follow us on Twitter to discover what's ready!

Open Tuesday - Saturday 9.30 to 6.00 (5.00 in winter)

Dave and Val Taylor, Wilanson, Lapford, EX17 6LY
01363 83389 07792 592068 @Blackberry_Lane
blackberrylane@gmail.com www.blackberrylane.co.uk

DO YOU NEED PLANS ?



w: bsa-exe.co.uk e: info@bsa-exe.co.uk

BARRIE SIMONS & ASSOCIATES is an Award Winning Architectural Practice, specialising in **Planning, Building Regulations, Interior Design, Project Management and Building Surveying.** We undertake New-build Houses, Barn conversions, Listed buildings, Extensions, Renovations and Equestrian & Agricultural Buildings of any size. View our extensive portfolio on the web and social media. BSA covers the whole of the South West and offers a **FREE INITIAL CONSULTATION.**



EXETER **CHAWLEIGH**
tel: 01392 2711734 tel: 07973617294



PHYSIOWORKS

With Green Massage Therapy

Chartered Physiotherapist - specialist in sports injuries (9 years experience in professional sports)

- Injury management & rehabilitation
- Pre / post surgery rehabilitation
- Sports & Remedial Massage
- Western Medical Acupuncture
- Clinical Pilates
- Kinesiology Taping

Common conditions treated:

- Back, neck and shoulder pain
- Sciatica / whiplash
- Tennis / Golfer's elbow
- Runner's knee
- Repetitive strain injury

Helen Greensmith BSc(Hons), MCSP, AACP, HCPC Reg
Tel: 07733227732 www.physioworks.today
Ebenezer Cottage, Lapford, Crediton. EX17 6PZ.



For all your domestic, agricultural and commercial pest control needs.

From Rats and Mice to Wasps and Fleas, contact me for a quick, convenient solution to pest problems.

I am fully qualified and insured.

Based in Zeal Monachorum covering all of Mid Devon and surrounding areas.

www.middevonpestcontrol.co.uk

Tel. 07725 520466 / 01363 881473

Email: enquiries@middevonpestcontrol.co.uk



Broomsmead Surfacing Ltd

Tarmac & Groundwork Specialists

Phone: 01363 83604 | Mob: 07813 763722 | [f /broomsmeadsurfacing](https://www.facebook.com/broomsmeadsurfacing)
Email: broomsmeadtarmac@gmail.com | Web: www.broomsmeadsurfacing.com

- Tarmac & Concrete Works • Slab Laying / Patios / Brick Paving
 - Site Clearance & Landscaping • VLS tar & chip surfaces
 - Install Septic Tanks / Drainage / Footings
 - Equine Arenas / Round Pens / Gallops
- Constructing New or Renovating Existing



TURNER FRAMES

Peter Turner, friendly and professional picture framer

Mount Cutting-Framing-Box Framing-Glazing-Repairs

Call me for a free no obligation quote

No job too big or too small

Locally based studio in Eggesford

Tel: 01769 581615 Mobile: 07802 256349

Email: pturner71@gmail.com

STEVE WREFORD GARDEN MAINTENANCE

- | | |
|------------------|------------------------|
| Lawn mowing | Hedge cutting |
| Strimming | Turf laying |
| Fencing | Patios and Decking |
| Pressure washing | General garden tidying |
- Any other jobs considered



Tel: 01363 884269 (ans available)
Mob: 07918866675



Mid Devon Helpers

When you need a helping hand the most
Shopping | Household Duties | Companionship | Errands

- ◆ Do you need a personal assistant or a helping hand?
- ◆ Do you know someone that desperately needs help with everyday tasks?
- ◆ Do you have clutter that has been getting on top of you?
- ◆ If you answer 'YES' to any of these questions We are here to help

01363 83058

07891556884

middevonhelpers@gmail.com

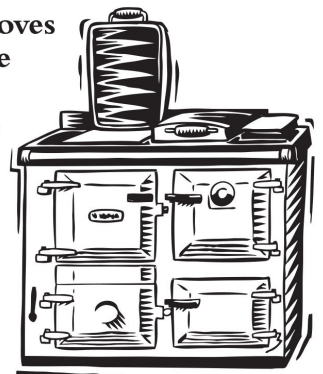
www.facebook.com/middevonhelpers

@middevonhelpers

COMPETITIVE PRICES, FRIENDLY STAFF, FULLY INSURED AND DBS CHECKED

Rangemoors. The home of Stoves Range Cookers and Renewables.

- Wood & Multifuel Stoves
- Cookers & Cookware
- Flues & Chimneys
- Spares & Accessories
- Logs & Multifuels



Find us outside Winkleigh on the A3124 Torrington road.
Open Mon to Sat, 9 - 5pm.

Call 01837 680068
www.rangemoors.co.uk



The Airfield, Torrington Road, Winkleigh, Devon EX19 8DW
HEATING • COOKING • LIVING

For latest news and updates find us on



St. Boniface
Veterinary Clinic



We are a friendly mixed practice with dedicated Farm, Equine and Small Animal teams. We aim to offer you a professional and highly skilled service from our branches in Credenon, Tedburn and Cheriton Bishop.



- Modern, purpose built, well equipped practice with keyhole surgery facilities.
- Large Reception area with separate dog and cat seating areas and kennelling.
- Preventative health care plans allowing significant cost saving and budgeting.
- Imaging suite including radiography, ultrasound and 3 different sized endoscopes.



- Complete farm services, including embryo transfer.
- Regular farmer meetings and training including our new Herdsman course.
- Medicine drop offs by arrangement.
- Annual farm health reviews.



- Equine surgical facilities and hospitalisation.
- Lameness investigations.
- Endoscopy and imaging.
- Preventative Healthcare Plans.



- Mobility assessments with dedicated rehab vet.
- Acupuncture, and other complementary therapies.
- Hydrotherapy - in house underwater treadmill.
- Tailored veterinary physiotherapy plans.

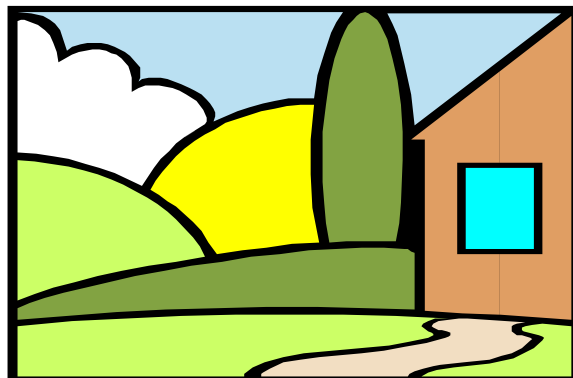
24/7
emergency
cover by our
own vets



01363 772860

www.stbonifacevets.co.uk

A View from my Window



Fed up with Covid?

Bored with Lockdown?

Why not make something, draw something, paint something, sew something, write a story, write a poem, make a model, take a photograph, or more than one thing on the above theme?

Lapford Village Talent Initiative will lead to an exhibition at the end of Lockdown. Have a go, see what you can achieve! Open to anyone living in the Parish.

LAPFORD PARISH COUNCIL

KEN HOGAN

TREE, HEDGE & GARDEN SERVICES

Fully Insured & NPTC Qualified Tree Surgeon



Crown Reductions, Felling, Dismantles, Storm Damage, Dead Wooding, Stump Grinding, Hedge Trimming, Logs, Wood Chip.

24 Hour Emergency Call Out.

www.kenhogantreeservices.co.uk

kenhogantreeservices@hotmail.com

01363 860193 or 07946 606093



Jo McDougall

Chartered Physiotherapist, MCSP, HCPC reg.

MOBILE PHYSIOTHERAPY

Need **Physiotherapy Treatment**? Have it in the comfort of your own home. I am a qualified Physiotherapist with more than 30 years of experience, and I will come to you to treat you at home.

Conditions treated include:

- **Back and Neck pain**, Sciatica, Whiplash.
- **Sprained joints/Ligaments** e.g. Ankles, Knees, Shoulder.
- **Pulled muscles** e.g. calf, thigh.
- **Sports Injuries** e.g. rotator cuff, tennis elbow, Achilles Tendonitis.
- **Hip pain** e.g. gluts pull, groin strain, piriformis
- **Rehab** after injury and operations e.g. Fractures, Knee replacement, Hip replacement etc
- Help with general **mobility problems**.
- **Pilates** and appropriate exercise programmes.

Contact details: mobile - 07597 160558

: **home** - 01363 877803

: **email** - jmcdphysio@gmail.com

: **website** - jomcdougallphysio.com

Albert and the team are friendly and helpful, based in **Lapford**, providing services for the local community and Mid Devon

PPM

Property Maintenance

Mob: 07495 468045
Tel: 01363 83491

Experienced | Certified | Insured



Property Maintenance & Handyman Services

Helping customers look after their properties. We are a one stop shop, providing quality work & service to our local communities



Plumbing & Heating C&G Certified

Bathroom Refurbs | Leaks | Taps | Valves
Bathroom Suites | Showers | WC's | TRV's
HW Vented & Unvented Cylinders | G3 Certified | Roof Tanks | Blocked Soil Pipes | Soil Waste Camera Surveys | Blocked Drains



Garden Maintenance

Grass Cutting | Hedge Trimming
Tree Pruning | Planting | Gardening Services | Weed Control | Spraying

NPTA Member
RSPH Certified

Pest & Vermin Control



Rats | Mice | Ants | Bedbugs
Carpet Beetle | Wasps
Cockroaches | Flies | Insects
Moles | Moths | Squirrels | Bees
Bird Control | Soil Pipe Camera Surveys



Oil Heating Services OFTEC Certified Technician

Annual Boiler Servicing CD11 | Landlords Certificates | Boiler Repairs | Boiler Installs
Boiler replacement | Tank Replacement | Tank Water Removal | Cookers | Fire Valve Testing



Locksmith Guardian Certified

Lock Replacements | Lock Fitting | Window Security Locks | Cylinders | Euro Locks
Mortice locks | UPVC & Wooden Door Locks
Break In's | Full House Re Locks | Garages
Vending Machines | Key Safes | Cash Boxes



Carpet & Upholstery Cleaning

Carpets | Rugs | Stairs | Hallways | Sofas
Suites | Chairs | Mattresses | Offices | Cars & Vans

*Minimum charge applies



Painting Domestic & Commercial

Internal | External Painting | Glossing
Emulsions | Domestic & Commercial | We Use Quality Brands | Trade Professional
Johnson's | Dulux | Regal 2 Pac | Corroless 1 Pac | Protek & Everbuild



Bricklaying Qualified & Certified

Bricklaying | Tiling | Patios | Paving Slabs
Shed Bases | Block Work | Concrete Slabs
Made to Size | Stone Dike Wall Repairs
Garden walls | Borders | Monoblock Paving



Waste Water & Mains



Guttering | Downpipes | Groundworks
Drainage | Soil Pipes | Alkathene | Mains
Water Drainage

YOUTH CLUB RE-STARTING??

YES from June, **BUT ONLY IF** people step-up to help. Our children and young people have missed out on so much in this last year dominated by Covid-19. Help give our kids a break by helping with the re-start of Lapford Youth Club.

Hi-Five Friday which has successfully ran for the last six years has joined forces with Lapford Youth Club to provide the youth of the village a more permanent weekly youth club.

Steve Keable and Cat Seymour need to hear from **volunteer helpers** who will **commit to one night every month**. (We're even willing for volunteers who can commit to one night every 2-3 months to enable this project to run).

Steve and Cat need a minimum of 15 adults to stick their hand up and say "yes" I'll do this. Each night needs a minimum of four people to help, running the tuck shop, organising activities, supervising outdoor play or just chatting. The Youth Club Management Committee have funds to kick-start new youth club activities for our young people. The Victory Hall has been booked for **every Thursday** evening in school term from June - and if we get enough helpers we may even be able to run a Summer Club from the end of July. Friday evenings are planned when the Hall is available,

We are very much at the planning stage working up how the Youth Club, High 5 and The ARK Friday nights can work together for the future. Drop us a line or make the call because without you to help this cannot happen.

Steve - Steve.keable@btinternet.com M:07967 655045

Cat - cathryn_seymour@outlook.com T:01363 884432

Dear Editor,

Fly tipping and dumping has become a very serious issue, but is this the biggest thing that has ever been dumped?

I took this picture of the dumped Presidential Mobile Home, several weeks ago, and it is still on the road in a lay-by between Morchard Road and Lapford on the A 377. A month later, it has been more vandalised now, both doors hanging off, despite having police tape around it... How on earth these mindless individuals got it there without anyone seeing, is beyond me. I understand the police would like any information as to who owned it.

Margaret Tucker, Crediton.

PS I did enjoy your Laughter is Good for you, in the March Lookout...!! In fact I've copied it to send to elderly friends!!



Lapford Lookout

It's nice to be important, but it's important to be nice.

Dear Editor,

Two things. I just wanted to say how sorry I am to read that Lapford Scouts are disbanding. What a shame. Scouting is so good. It teaches so much in a fun way and there are lots of opportunities.



The second thing I want to say is we are lucky to live in Lapford.

I live at the top of Lapford and when it was so windy (23rd February 2021) I thought my fence was going to break and blow away doing untold damage. The wind was really howling and it was really frightening as I thought I was going to be blown off my feet. I rang Steve Wreford (who advertises in the Lapford Lookout) and said I had a problem. He came right up and stopped the fence from blowing away.

What kindness, especially as it was gone 6pm when I rang and he was probably looking forward to a nice evening in! Thank you Steve.

Pat West

Dear Editor,

LETTER RE LOWER TOWN PLACE

From my reading of the last two 'Lookouts' I understand that there has been some disapproval and scepticism from a few people around what has already been done, and around possible future development of Lower Town Place. I am perplexed. I think the site looks lovely. I know it is only in its embryonic state, but I love the open green space, the old trees that have been retained, the nesting boxes and, in the far corners, the hibernation hotels for small creatures. On cold, windy, wet days when my lockdown outdoor exercise has only extended to a short walk round the village, I have looked forward to the moment when I come down the hill and take the path round the perimeter and leave via the gate by Melissa's shelter. I imagine the warmer weather and a time when maybe there will be bird families using the boxes, and blossom on the apple tree and when (hopefully not too long now) teenagers can sit together on the grass. My teenage years are long gone, but I might even do that myself.



Regarding future ideas - one thing which I think would be lovely, would be some sort of little area for anyone who just wants to sit peacefully and quietly reflect outdoors. Nothing fancy, maybe just a circular space with a couple of seats in it and maybe a birdbath or a few flowers to look at? (although I'm aware that plants - and a birdbath - involve ongoing care). A little area of wildflower meadow would be nice too.

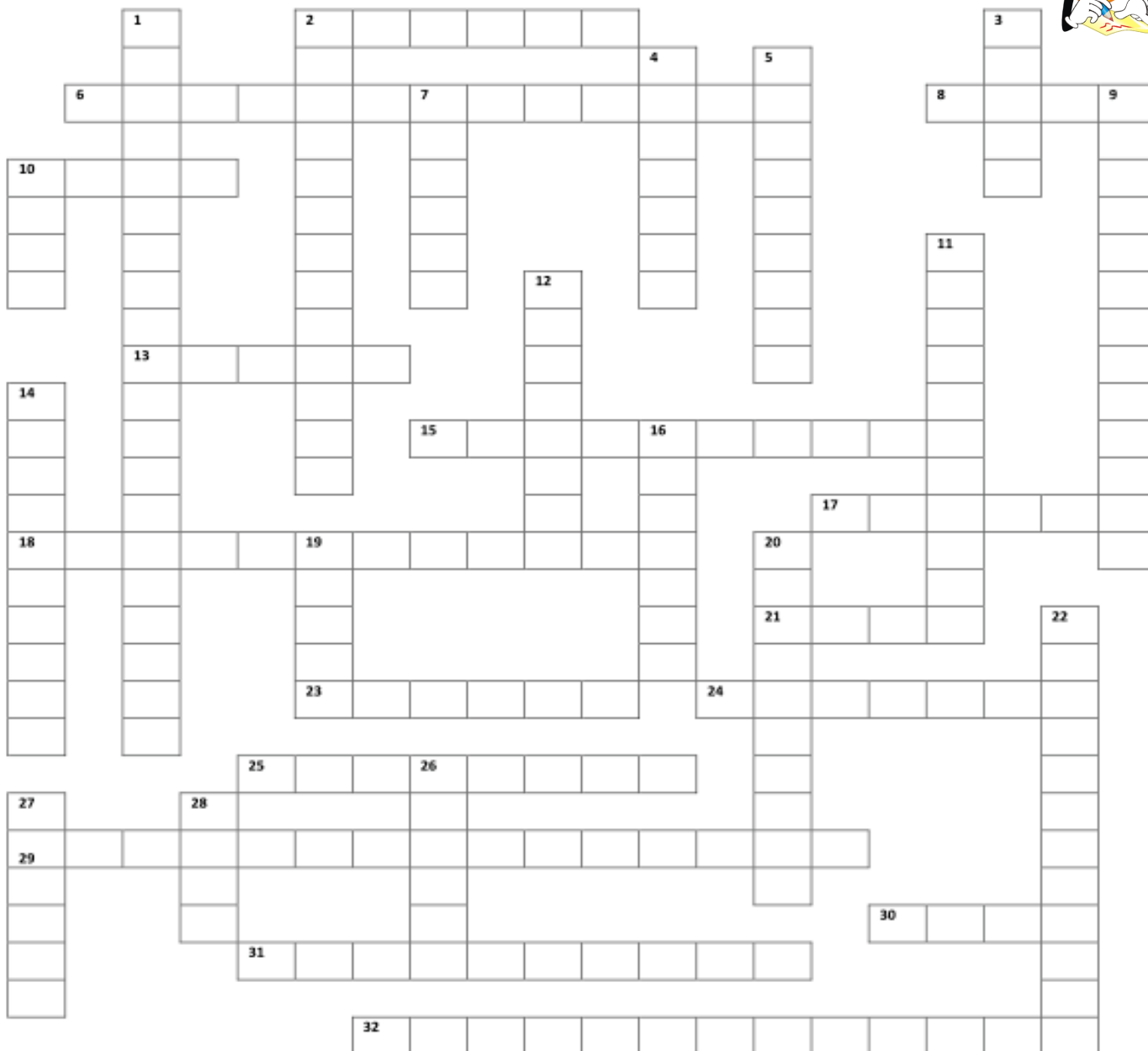
However, for the moment, I just want to say to anyone who has played a part in it so far - absolutely Well Done.

Yours sincerely

Penny King

PS I thought the spring photos on the cover of last month's Lapford Lookout were beautiful!

PUZZLE CORNER - EASTER CROSSWORD



Across

- 2 Which country has the largest egg museum? (6)
- 6 Who was made to carry the cross of Jesus? (5,2,6)
- 8 What are the 40 days leading up to Easter known as? (4)
- 10 What item of clothing is worn by women at the Easter Parade? (4)
- 13 Easter Island belongs to which country? (5)
- 15 On what Christian holy day are hot cross buns traditionally eaten? (4,6)
- 17 The Roman's in an effort to mock Jesus gave him a 'crown' of what? (6)
- 18 What 1948 musical starred Judy Garland and Fred Astaire? (6,6)
- 21 What flower is associated with Easter? (4)
- 23 Purple and what other colour is associated with Easter? (6)
- 24 Which bird lay's the largest egg? (7)
- 25 Which Birmingham chocolate company was founded in 1824? (8)
- 29 What name is given to the day before Palm Sunday? (7,8)
- 30 In 1873 which company introduced the first chocolate Easter egg in Britain? (4)
- 31 What do children hunt for on Easter day? (6,4)
- 32 Who wrote the Easter hymn 'Christ the Lord has risen today'? (7,6)

Down

- 1 What did Judas get paid for betraying Jesus? (6,6,2,6)
- 2 Which governor of the Roman province of Judea presided over the trial of Jesus? (7,6)
- 3 At the Last Supper, which food did Jesus liken to His body? (5)

- 4 In what country does the Easter bunny originate? (7)
- 5 Who directed the 2004 American biblical film drama 'The Passion of Christ'? (3,6)
- 7 In the Easter song, Lord of the Dance, on which day did the world turn black? (6)
- 9 Where is the venue of the most famous Easter egg roll in the world? (3,5,5)
- 10 What is the missing word in the Easter hymn, 'There is a green ____ far away? (4)
- 11 At Easter the British monarch distributes small silver coins known as what? (6,5)
- 12 What is the name of the hill where Jesus was crucified? (8)
- 14 Which light fruit cake, with a layer of almond paste is traditionally eaten during the Easter period? (6,4)
- 16 Which Russian jewellery firm is famed for designing elaborate jewel encrusted eggs? (7)
- 19 Nick Easter is a former professional sportsman in which game? (5)
- 20 What is the Sunday before Easter called? (4,6)
- 22 Which Christian holy day of prayer and fasting falls on the first day of Lent? (3,9)
- 26 What do the children carry when collecting Easter eggs? (6)
- 27 How many balls of marzipan are there on a traditional Simnel cake? (6)
- 28 What meat is traditionally eaten on Easter Sunday? (4)

THE CENSUS

Households across the nation were asked to take part in Census 2021 on 21st March.

The Census is a once-in-a-decade survey that gives the most accurate estimate of all the people and households in England and Wales. It has been carried out every decade since 1801, with the exception of 1941.

The Census is a snapshot of who we are and how we live our lives. The information is vital for assessing community needs for services such as schools and Doctors surgeries as well as how our communities are made up and changing.

Results will be available within twelve months, although personal records will be locked away for a hundred years, kept safe for future generations.



COUNTRYSIDE HUMOUR



Two cows were standing in a field. The brown one went moo and the black went baa! So the brown cow asked the black cow "Why did you go baa?" To which the black cow replied "I'm learning a foreign language "



LIBRARIES UNLIMITED BOOKS ON WHEELS

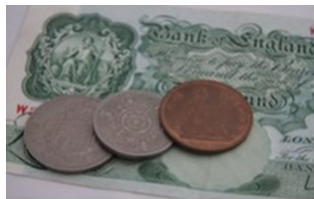
Do you have difficulty in getting to Crediton Library and carrying heavy books home to read? Or even reaching the mobile library? Would you like us to collect and deliver talking books, or large and normal printed ones of the kind that you enjoy, directly to your home free of charge? If so, I will be happy to help.



Peter Westcott - Telephone: 01363 83525

DECIMILISATION QUIZ ANSWERS

1. £14 (14 lbs)
2. 10s (half a knicker)
3. 1 1/4d (penny farthing)
4. 1s (Bob)
5. 3/4d (three far things)
6. £1 1s (guinea)
7. 5s (crown)
8. 6d (tanner)
9. £1 (pound)
10. £6 (six squid)
11. 1/2d (ape knee)



12. £10 (tenor)
13. 3d (joey) (also accept 4d/groat)
14. £1 (sovereign)
15. 1d (Penny)
16. 3d (half a sixpence)
17. 1/2d (ape knee)
18. 4d
19. 5s (crown)
20. 6d (also accept 3d)
21. £20 (score)



Total **£54 4s 2d** (with appropriate adjustments for alternative answers to questions 13 and 20).

CHURCHES TOGETHER WOULD LIKE TO WISH YOU A HAPPY EASTER!

As we can't have our normal children's Easter event this year we have decided to do a fun quiz. All you need to do is write down the answers to the questions and send it to cathryn_seymour@outlook.com or post your answers through the letter box of The Ark. Everyone who sends the correct answers will win a little sweet treat for every child in their family. Please make sure that you put your name, contact details and address and how many children are in your family so your reward can be delivered. Entries in no later than 16th April.

CHURCHES TOGETHER EASTER QUIZ

1. Does Easter happen on the same day every year?
2. Why is the period of lent observed for 40 days and 40 nights?
3. The first day of Holy Week celebrates Jesus's arrival in Jerusalem riding on which animal?
4. What food is traditionally eaten on Shrove Tuesday?
5. What type of hat is traditionally decorated at Easter?
6. What is given to the name of the Friday in Holy Week?
7. Why are eggs associated with Easter?
8. What is given to the name of the meal that takes place in the Bible on Maundy Thursday?
9. Which cake is traditionally eaten at Easter that has eleven marzipan balls on the top?
10. Who was the first person to see Jesus alive when he rose on Easter Sunday?
11. Can you name two animals associated with Easter?
12. What food is traditionally eaten on the Friday before Easter?
13. What is the name given to the game where you search for Chocolate eggs and place them in a basket?
14. Which flower is typically associated with Easter as it is said to grow to honour Jesus with its head down?
15. What are the two traditional colours of Easter?



A QUOTATION

“Resilience is accepting your new reality, even if it's less good than the one you had before. You can fight it, you can do nothing but scream about what you've lost, or you can accept it and try to put together something that's good.”

Elizabeth Edwards

A GLOW WORM

I wish I were a glow worm,
A glow worm's never glum.
'Cause how can you be grumpy,
When the sun shines out your bum?!



WHAT'S ABOUT TO HAPPEN AT THE PARISH CHURCH?

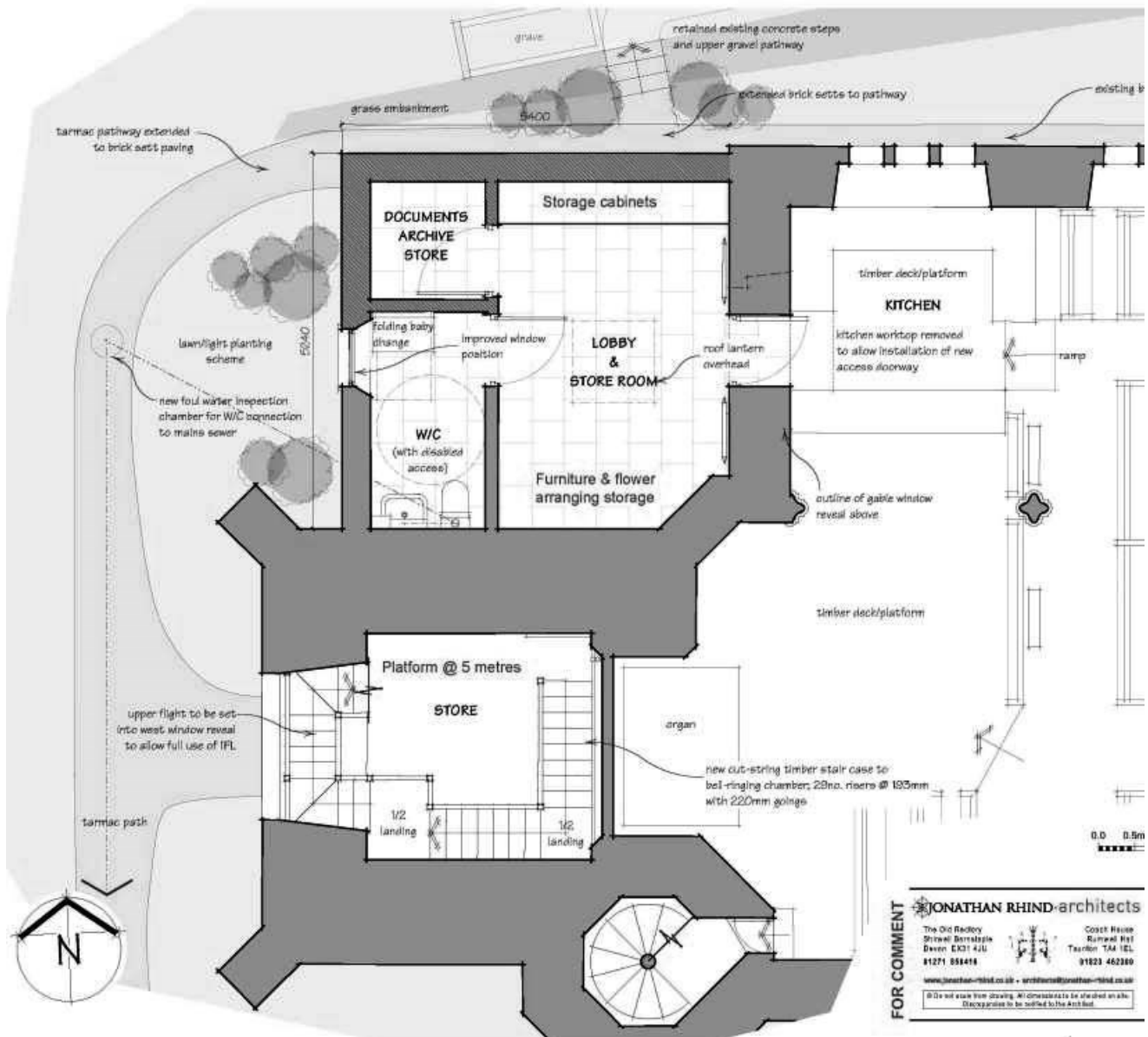
For many years now the congregation and those who visit the church for family occasions have bemoaned the lack of a toilet and of baby change facilities. Alongside this, our ringing team have some challenges with the bells, especially with the limited space on the ground floor.

The Diocese has now granted a Faculty (ecclesiastical planning consent) for us to build an extension in the north west corner to house a fully accessible toilet with baby change facilities. This extension will also provide much-needed space for the storage of other church records and effects.

The location is the site of the former corrugated metal shed. All the necessary archaeological and environmental assessments have been completed by professional consultants and there is nothing that would be disturbed.

In the bell tower, a platform will be constructed some five metres above the current ringing floor to reduce the 'stretch' effect in the ropes and create some additional space in the window recess to accommodate ringers under instruction.

Both of these improvements will be funded from the generous legacy of Phyllis Partridge MBE, who also commissioned the magnificent memorial window in the Lady Chapel.



Lapford Preschool
 Care for 2 - 5 year olds
 Monday - Friday, 9.00am – 3.30pm
 Wrap around care is available through the school

Please call Lorraine Kigongo on 01363 83162
 or email lkigongo@catpreschools.co.uk
 for further information and to arrange a visit.

We are registered to take 2yr old and 3 / 4 year old
 funded children at all of our settings.

We are registered for 30 hours funding.
 - We are open term time only -

NATIONAL BLOOD SERVICE



Donations can be made at
 Boniface Centre, Crediton,
 on Tuesdays 6th or 13th July 2021
 at 13:10 to 19:15
 or at Chulmleigh on 29th July



Call the donor helpline on 0300 123 23 23
 for more information or to check for cancellations

Do something amazing - Give Blood!

NB Travel to blood donation sessions
 is considered essential travel

LAPFORD VILLAGE CHARITY CLEARANCE SALE

A considerable quantity of 'end of line' and clearance goods have been donated for sale to support the Victory Hall and HOLD in developing new facilities for the community.

These include brand-new and part used power tools, quantities of nails and screws, brand new laptop cases and children's school bags, computer items, brand new rucksacks, assorted plumbing and electrical goods, a brand new Kodak photo printer, caravan light fittings, plant pots, garden water feature bowls, outdoor events equipment The list goes on!



Brand new power drill/drivers
 THREE AVAILABLE
 Plus nearly new power tools and
 a gas powered nail gun



New branded laptop cases,
 document cases and school bags



Brand new Kodak ESP 7 photo printer
 with two extra boxes of cartridges, all
 still with security seals from Staples



Sky box (new), Microsoft wireless
 mice (6), USB cables, new Blackberry
 phone, new and used Nokia phones



Fifty or more boxes of Screwfix
 screws in sizes 6 to 12, lengths
 up to 3", and two tubs of 4" nails



New branded rucksacks in various sizes
 from 30 to 60 litres

**ALL OF THIS WILL GO ON SALE AT THE VICTORY HALL AS
 SOON AS NON-FOOD SHOPS ARE ALLOWED TO RE-OPEN**

Times of opening and more details, pictures, lists etc will be
 published on www.lapfordvillage.co.uk from the beginning
 of April. Social distancing and masks required.

HEART FOR LAPFORD STRATEGY GROUP

Roadmap for 2021-2023

The March issue of the Lapford Lookout introduced and presented the four-page detail of the Roadmap and asked for your responses to it. The purpose of the Roadmap is to communicate with and engage parishioners, so that together our village can move forward. Through understanding the views and needs of parishioners and consideration of new or improved facilities the Heart For Lapford Strategy Group can bring together the collective efforts of the eight constituent organisations to enhance the centre of the village.



The Roadmap is available to every home in Lapford and if you missed your copy of the Lapford Lookout then please go on line to <https://lapfordvillage.co.uk/lapford-lookout-march-2021-edition>.

Have your say:

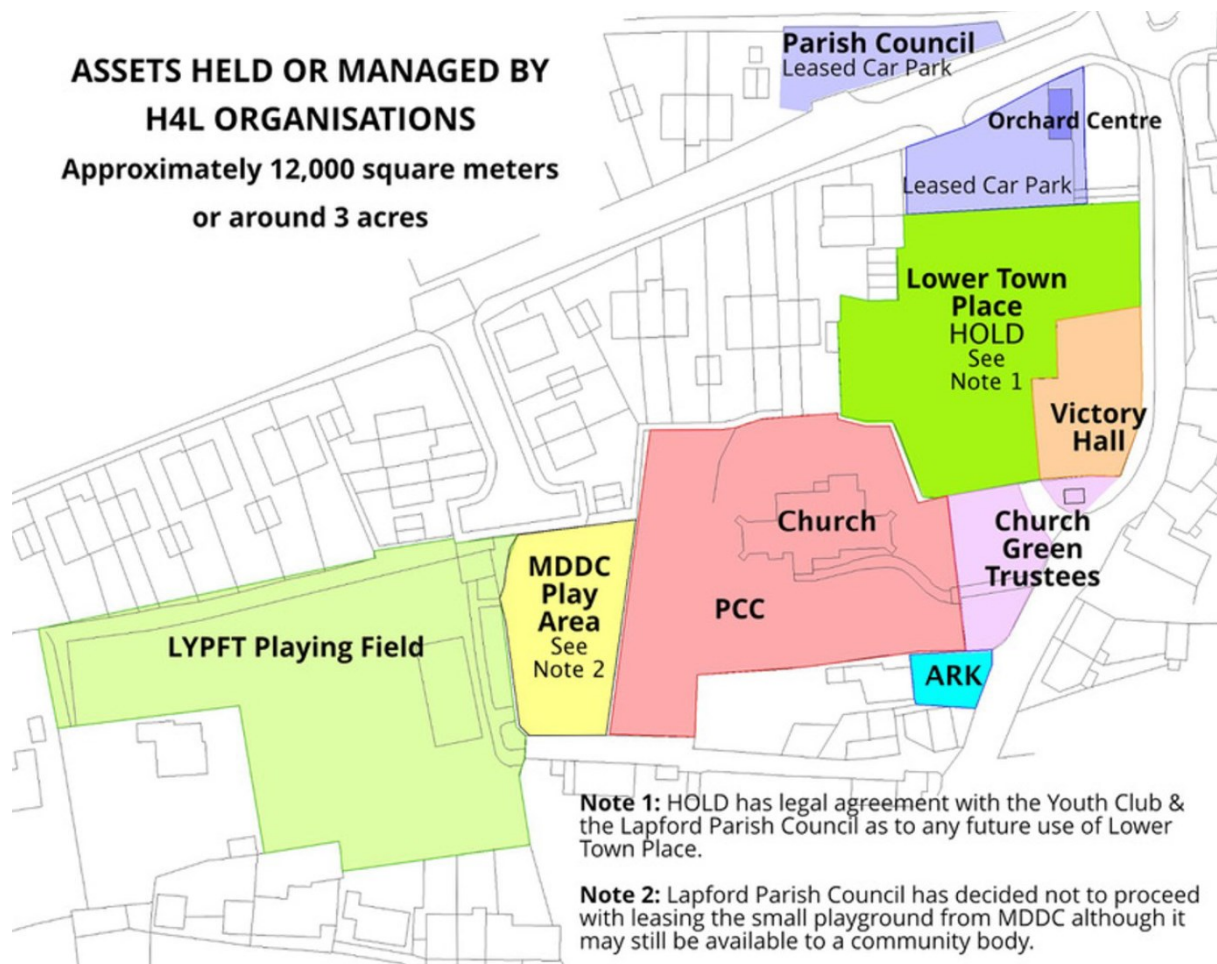
H4L Strategy Group welcomes responses to this Roadmap, either through the Lapford Lookout or to heart4lapford@aol.com. All contributions will be carefully considered and in due course a summary document will be prepared for publication.

Note: in the March Lapford Lookout hardcopy article there was an error in this email address and it is corrected here and online.

Next Steps:

- We have agreed a limited number of key aims for the next two/three years, with the actual target timescales being implemented from the end of the Covid-19 restrictions. (Continued restrictions may require adjustments to target dates)
- We have identified key objectives, timescales and responsibilities to achieve these aims.
- We have consolidated these into a simple unambiguous format to be communicated to parishioners i.e. The Roadmap.
- We will ensure that The Roadmap is promoted through appropriate social media channels such as the village website, www.lapfordvillage.co.uk, Lapford Lookout, and laminated poster displays sited at key public locations.

H4L Strategy Group Roadmap for 2021-2023 discussed and developed through 2020
and finalised in current form in February 2021



RAIL NEWS - LAPFORD RAIL FARES DECREASED (SORT OF)

Does anyone ever actually make the decision on whether to use the train, as opposed to bus, car or even plane, based on the price? Do you ever check the fare before travelling or just accept whatever it is – maybe with a little grumble when it seems rather a lot?

Well, little did we know that for several years, Lapford rail users travelling towards Exeter have been paying too much. We have been paying exactly the same fares as passengers travelling the longer distance from Eggesford, while journeys from Morchard Road have been disproportionately lower. We should have reasonably expected Lapford fares to be somewhere between those from Eggesford and those from Morchard Road. Instead, due to some past administrative error, Lapford fares have been incorrectly too high.

The good news is that, after raising the anomaly with GWR local managers, they have acknowledged the error and agreed to do something about it. But before we get too excited, we have to temper this news with an unfortunate reality: GWR do not have unfettered control of their fares. Ultimately, the DoT determine fares policies and it is not within the gift of GWR to reduce pre-determined fare structures. So where did we go from here?

Ever since railway privatisation in 1995, the DoT rules have broadly stipulated that fares rise annually by RPI +1%, intended to progressively increase the contribution by the rail user and reduce the subsidy burden on the taxpayers, but leading to the annual public outrage when fares go up more than inflation. When the Parish Council pressed GWR to correct the error and reduce Lapford fares, GWR were simply unable to do so even though they acknowledged the historical error. Finally, after persisting with our ambitions to achieve fairness for Lapford passengers, a loophole was found: It may not be possible to reduce fares but it is possible to freeze them! Last month, when rail fares across great Britain went up by RPI + 1%, accompanied by the annual outcry in the media – Lapford fares did not change. Hence, the heading to this article: our fares haven't really reduced but neither have they gone up - while all those around us have. Lapford fares have (effectively) decreased. Thank you GWR.

Lapford Parish Council Regeneration Committee



LOWER TOWN PLACE UPDATE – April 2021

With the arrival of spring the completion of the first landscaping phase and the unlocking of Covid Lockdown, we are now asking you to identify what you would like to see in the next phase at Lower Town Place? Here are some ideas for starters:

- Bench seats
- Picnic tables
- Community BBQ

Two businesses have come forward to sponsor such and similar items if these are supported. We would like to hear from you about your ideas plus any offers of donations that will have an immediate benefit to the community.

Tell us what you think about these ideas that have come forward:

- Shelter for young people to 'hang out'
- External power supply for 'events'
- Screening for the two storage containers that release space in the Victory Hall.

These ideas build on a good deal of hard work in the last two months:

- Joint Victory Hall and HOLD group moving tables and chairs into their storage container;
- Donated goods sorted ready for sale to raise funds;
- Work on storage access and lighting with local tradesmen ongoing;
- Request from Lapford Dog Club to access a restricted area on club nights at the Hall;
- Joint hiring arrangements between Hall and Lower Town Place;
- Removal of old chain link fence to car park with new fence erected by volunteers and a helpful local contractor at a massively reduced cost;
- Hedge planting which included Beech, Hornbeam, Field Maple, Hawthorn and Copper Beech which should give good autumn colours and berries/blossom from the Hawthorn;
- Grafted apple tree cuttings (scions) from local trees, including the cooker on the old allotment planted by Bill Manning's father in 1927 and from the school tree (Parry's Pippin) planted by a previous head Noel Parry.
- Grafting scions also came from orchards belonging to Steve Munday at Lowerfield and Andy Epstein at West Farm. Eddy the postman has also supplied scions from an old Devon tree called Upton Pyne. These have been grafted onto dwarf root stock and will be used as cordons along the road fence.

Lower Town Place has come a long way in this last year. As the weather improves and Covid restrictions are lifted, the focus is upon the items at the start of this article and event planning with other local groups. We need to hear from you to build upon these ideas - peter.norman64@gmail.com

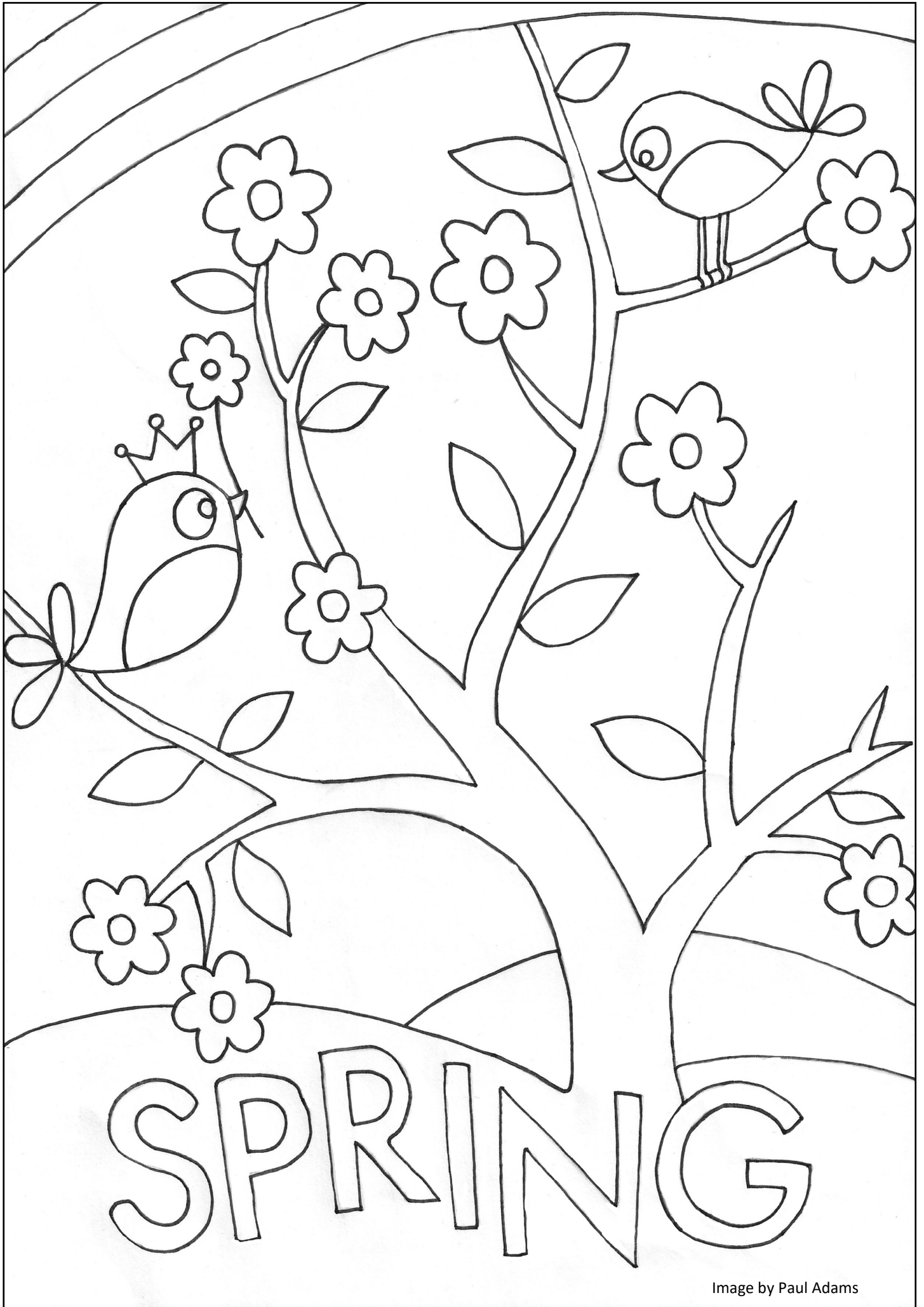


Image by Paul Adams

MODERN STUDIES

People who eat natural foods die of natural causes.
A politician will always be there when he needs you.
If everyone has a flu vaccination, you don't need one.
Beware of buying anything when the manual is more complicated than the equipment.
Good judgement comes from experience, and experience comes from bad judgement.
An accountant is someone who comes to a different conclusion when he adds up your expenses.

LAPFORD LOOKOUT ADVERTISING RATES AND POLICY

Lapford Lookout has a circulation of 600 copies and the advertising of village events is free of charge. There is a charge for all other advertisements and current advertising rates, **payable in advance**, are:

One eighth page:	£6 per month.
One quarter page:	£12 per month.
One half page:	£24 per month.
Whole page:	£48 per month.

Pay for 12 months and you get **one extra month, FREE!** Please send all advertising requests to the Editor in time to make the deadline of the 14th of each month for inclusion in the next issue. Please allow sufficient time to make your advance payment which may be by BACS or cheque. Payment details will be on your invoice.

LAPFORD PARISH COUNCIL GRASS CUTTING TENDER

Lapford Parish Council is inviting tenders for grass cutting around the village for 2019/20. If you are interested in providing a quote, please use the specification below:

General Specifications

- The work is to start in May 2021 and run until the following April 2022.
- All grass cuttings must be taken away by you.
- Both properties must be cut during the week before the start of the Lapford Revel (date to be confirmed) and during the week before Remembrance Sunday (7th November 2021).
- It is a requirement that you hold Public Liability Insurance to the value of £2 million. The policy must be available for inspection upon request.

Detailed Specifications

1. Lapford Parish Council property
 - Cutting grass around Victory Hall x 10 cuts
 - Strimming around flower box at village sign at top of village x 4 cuts
 - Strimming around the village seats situated at the top of the village, Eastington Lane and opposite Highfield x 4 cuts
2. Lapford Church Green Trustees' property
 - Cutting grass on the Church Green and around the Melissa Lake Memorial Shelter x 10 cuts

Please reply to the Lapford Parish Council Clerk by Friday 30th April 2021 using the details within the contact section of this Lapford Lookout.

MILLIONAIRE

A woman proudly told her friend, "I'm responsible for making my husband a millionaire".
"Well what was he before he married you?", the friend asked.
"A billionaire".

OPPORTUNITIES TO JOIN LAPFORD PARISH COUNCIL

When two vacancies on The Parish Council were first announced in November 2020, a request for an election for these posts was received by Mid Devon District Council. Due to COVID19 restrictions, the earliest date for any elections was announced as 6th May 2021. This unfortunately meant that the Council were unable to co-opt any suitable persons and that an election must take place, hopefully in May. MDDC have been advised that, at this time, it is uncertain how many vacancies will arise and have made the required provision for the deadline for postal notification of candidates via the Electoral Roll to be extended in the case of Lapford. A closing date for candidates is yet to be advised.

CALL FOR CANDIDATES

A number of vacancies will arise on The Parish Council and candidates are invited to put their names forward for election. Should there be fewer candidates than vacancies, then an election will not be necessary and those candidates who have put their names forward will automatically be deemed to have been elected.

Candidates for election should bear the following in mind. A good Parish Councillor should be able to:

- ✓ Have a good working knowledge of and interest in the community and local affairs.
- ✓ Be forward thinking.
- ✓ Be willing to listen to and represent the views of Parishioners regardless of his or her own opinions.
- ✓ Offer skills or expertise to forward the work of the Council.
- ✓ Listen and comment constructively.
- ✓ Be a good team player.
- ✓ Be willing to learn and undergo training.
- ✓ Represent the Council to the community in a positive way.
- ✓ Have the time to attend the monthly meetings of the Council and other affiliated or associated groups as may be required.
- ✓ Candidates must have been resident in the Parish for at least twelve months or employed in the Parish as their main place of work for that time.

For any further eligibility information, any additional information please contact the Parish Council Chair, Ian Hemsworth on 01363 884460.

Email: i.hemsworth@btinternet.com.

If you would like to stand as a candidate for these elections, you must submit your nomination between 25 March and 8 April 2021.

For further information see: <https://www.middevon.gov.uk/your-council/voting-elections/2021-elections/> and then follow the links provided on the page

IN CASE OF AN EMERGENCY IN LAPFORD




KEEP CALM
AND FOLLOW THE
EMERGENCY PLAN

Parish Council Contact:
Ian Hemsworth - 01363 884460

Village Contact:
Roy Trevaskis - 01363 83742

South of Taw/A377 Contact:
Sue Briant-Evans - 01363 83763

USEFUL TELEPHONE NUMBERS

- Emergency numbers ~ 999 or 112
- Childline ~ 0800 1111
- Churches House Action Team ~ 01884 255606
- Citizens Advice Bureau ~ 03444 111 444
CAB Crediton ~ 01363 776210 (M, W, Th, 9-3)
- Crediton Ring and Ride ~ 01363 773303
- Crimestoppers ~ 0800 555 111
- Dog Fouling/Fly Tipping 01884 255255
- Environment Agency Floodline ~ 0845 9881188
- Farming Community Network ~ 03000 111 999
- Gas Emergency ~ 0800 111999
- Highways (roads/lights/potholes) ~ 0345 155 1004
- Mental Health Support Out of Hours ~ The Moorings
@Devon ~ Exeter: 07990 790 920 or
Barnstaple: 07850 927 064
- NHS for non urgent medical needs ~ 111
- Patient Participation Group ~ Bill Graham ~ 01363 83047
- Police Non-emergency ~ 101
- Power cut ~ 105 or 0800 6783 105
- RSPCA ~ 0300 1234 999
- Safeguarding concerns and Social Services ~ 0845 6000388
- Samaritans ~ 116 123, 01271 374343, 01392 411711
- SHOUT ~ Text 85258 for help from crisis volunteers
- Water leaks or burst mains ~ 0800 230 0561



LAPFORD OUTREACH POST OFFICE



OPENING HOURS:

Monday 9.00 - 12.30
Wednesday 9.00 - 12.30
Friday 9.00 - 12.30

LAST POSTING TIMES AROUND THE VILLAGE

	<u>Mon-Fri</u>	<u>Saturday</u>
Eastington Cross	4.30p.m.	11.00 a.m.
Woodland Cottage	3.00 p.m.	7.30 a.m.
Industrial Estate	9.00 a.m.	7.00 a.m.
Highfield	4.45 p.m.	10.15 a.m.
Orchard Way	9.00 a.m.	7.00 a.m.
Saxtons	4.30 p.m.	10.15 a.m.
Morchar Road	5.00 p.m.	11.15 a.m.

In addition, items left at the Post Office during opening hours will be posted that day via North Tawton.

LAPFORD PARISH COUNCIL, ETC

Cllr Ian Hemsworth (Chair)	Argosy, Lapford, EX17 6PX	01363 884460 / i.hemsworth@btinternet.com
Cllr Sue Briant-Evans (Vice Chair)	Edgerley Cottage, Lapford, EX17 6AH	01363 83763 / susanbriantevans@gmail.com
Cllr David Davenport	Pleasant Cottage, Lapford, EX17 6PZ	01363 884236 / daviddport@gmail.com
Cllr Julie Down	Rafters, Lapford, EX17 6QP	01363 83356 / julielpc@hotmail.com
Cllr Donna Egan	Primrose Cottage, Lapford, EX17 6PZ	01363 83732 / donnaegan84@gmail.com
Cllr Hilary Hassett	School House, Eastington Lane, Lapford, EX17 6QE	01363 83858 / hilary.hassett66@gmail.com
Cllr Peter Heal	Ashlands, Lapford, EX17 6AE	Home - 01363 884277 / Office - 01363 775467 peter.heal@btconnect.com
Cllr Alex Shapland	13 Highfield, Lapford, EX17 6PY	alex1990shappers@hotmail.com
Vacancy	~	~
Vacancy	~	~
Parish Clerk - vacancy	~	lapfordpc@live.co.uk
District Cllr Clive Eginton	6 Moortown, Chawleigh, Chulmleigh, EX18 7EU	01769 580830 / ceginton@middevon.gov.uk
County Cllr Margaret Squires	Frostland Farm, Copplestone, EX17 5NY	01363 84337 / margaret.squires@devon.gov.uk
Mel Stride MP	House of Commons, London, SW1A 0AA	02072 197037 / mel.stride.mp@parliament.uk

NAME OF SOCIETY	CONTACT	TELEPHONE / EMAIL
<p>LAPFORD EMERGENCY RESPONSE TEAM - CORONAVIRUS LOCAL HELP</p> <p>Adventure Gaming Beginners Ballroom Dancing Banyu Hatten Aikido Books on Wheels Friends of Langannerie (twinning) Friends of Lapford Mill Friends of Lapford School Heart for Lapford Strategy Group (H4L) HOLD Ladies of Lapford (LOL) Lapford Allotment Society Lapford Amateur Dramatic Society Lapford and District Pre-school Playgroup Lapford ARK Lapford Association Football Club Lapford Book Club Lapford Choir Lapford Dog Club Lapford Emergency Action Plan Committee Lapford Emergency Response Team Lapford Foodbank Lapford Handbell Ringers Lapford High 5 (ages 7-12) Lapford Gardening Club Lapford Gardening Club (Shows) Lapford Lookout Lapford Meat Bingo Lapford Pilates Lapford Over 60 Club Lapford Poppy Appeal Organiser Lapford Project 2000 Lapford Regeneration Committee Lapford Revel Lapford Revel Volunteers Lapford School Lapford Scouts Lapford Short Mat Bowls Lapford Victory Hall Booking Secy (Temporary) Lapford Village Archive Lapford Voluntary Car Aid Lapford Youth and Playing Field Trust Lapstock Nymet Rowland Village Pump Save Our Heritage Lapford Springers 4's and under The Friends of St Thomas of Canterbury</p>	<p>Mr Warren Clayburn Mr Steve Munday Mr Geoff Flather Mr Peter Westcott Mr Peter Henshaw Mr Alex Gater Mrs Kirsty Wensley Secretary Mr Bill Graham Mrs Joy Quickenden Mr Raymond Waldron Mr Ian Wilkie Mrs Lorraine Kigongo Mrs Briony Clinch Mr Niall McAreavey Mrs Jill Doe Mrs Cat Seymour Mrs Sara Thurgood Mrs Sue Briant-Evans Mr Alex Gater Mrs. Briony Clinch Mr Steve Munday Mrs Cat Seymour Mr Richard Hassett Mrs Jeanne Whittaker Mrs Beccy Fletcher Mrs Jayne Grover Steph Heard Mr Ron Kercher Mrs Caroline Noon Mrs Sue Briant-Evans Mr Ian Hemsworth Mr Alex Gater - Mrs Clare Wilmott Mrs Hayley Hardy Mr Jon Tucker Joanne Mrs Jeanne Whittaker Mrs Grace Hill Miss Helen Greensmith Mr Steve Keable Liz and Roland Smith Mrs Donna Egan Mrs Caroline Gilpin Mrs Prue Lambert</p>	<p>07966 144772 / help@lapfordvillage.co.uk Facebook: Help the Vulnerable in our Community (Lapford)</p> <p>01363 83095 / wmclayburn@gmail.com 07798 684225 / steve@lowerfieldhouse.co.uk 01363 83355 / bhaikido@googlemail.com 01363 83525 / pj.westcott@btinternet.com 01837 89070 / petehenshaw@yahoo.co.uk 07815 795918 / alex@lapfordmill.uk 07977 825814 heart4lapford@aol.com 01363 83047 / bg4847@aol.com 01363 83245 / joyquickenden@gmail.com 01363 83894 / ednawaldron@btinternet.com 01363 83437 / i.wilkie45@btinternet.com 01363 83162 / lapfordpreschool@gmail.com 01363 83788 01363 83733 / lapfordafc@gmail.com 01363 83410 / sunnyside@jilldoe45.plus.com 01363 884432 / cathryn_seymour@outlook.com 01363 83081 / info@lapforddogclub.co.uk 01363 83763 / susanbriantevans@gmail.com 07815 795918 / alex@lapfordmill.uk 01363 83788 07798 684225 / steve@lowerfieldhouse.co.uk 01363 884432 / cathryn_seymour@outlook.com 01363 83858 / rich.hassett@btinternet.com 01363 83068 / jeanne.whittaker@btinternet.com 01363 884211 / lapfordlookout@gmail.com 07900 477247 07773 010512 / steph.instructor@talktalk.net 01363 83810 / lapfordover60@yahoo.com 01363 83863 / lapford.pao@gmail.com 01363 83763 / susanbriantevans@gmail.com 01363 884460 / i.hemsworth@btinternet.com 07815 795818 / alex@lapfordmill.uk revelvolunteers@gmail.com 01363 83292 / admin@lapford-primary.devon.sch.uk 07730 368636 / Hayley.Hardy@middevonscouts.org.uk 07814 568846 / 07803 002910 01363 83068 / jeanne.whittaker@btinternet.com 01363 83178 / lvca2011.19@gmail.com helengreensmith@hotmail.com 07967 655045 / steve.keable@btinternet.com 01363 884446 / pump@incywincyweb.com 01363 83732 / donnaegan84@gmail.com 01363 83674 / caroline@gilpin.eclipse.co.uk 01363 83150 / pruelambert@yahoo.co.uk</p>

THANK YOU!

The Friends of The Ark would like to thank everyone in the village who supported the Cream Teas in a Box on Mother's Day. In total 80 cream teas were delivered and the donation to the Foodbank was £480.

Special thanks go to the bakers who provided a mountain of delicious scones, to Rodda's who donated the cream and to the team of deliverers who ensured that people received their boxes.



More Bake Off Entries

